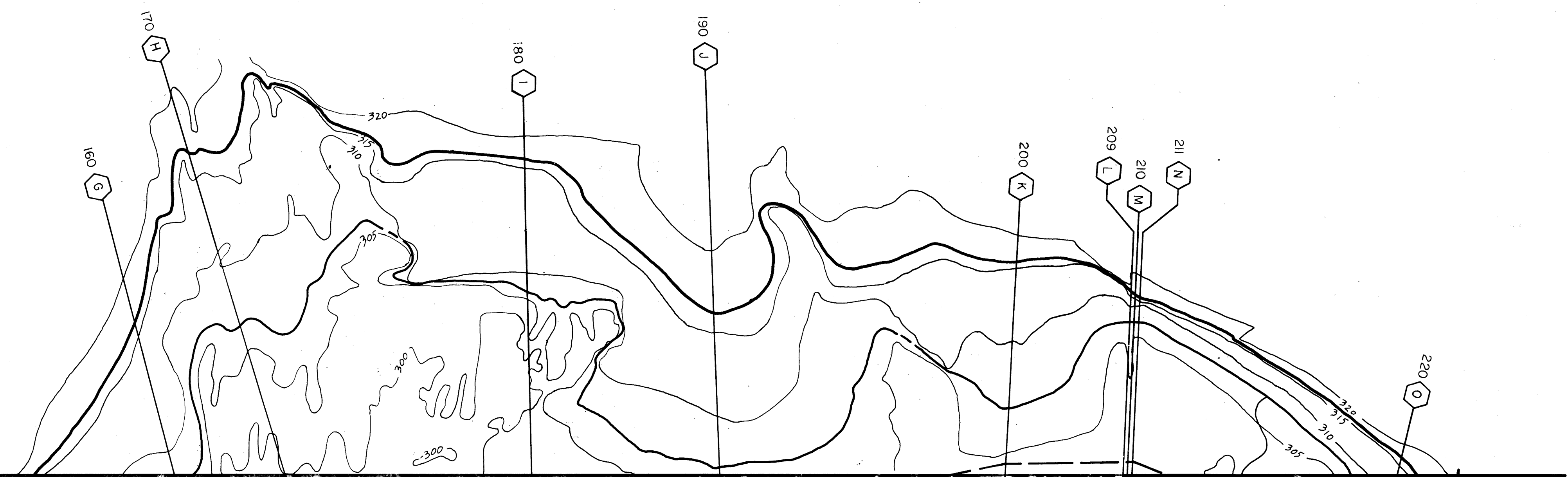


INDEX MAP
N.T.S.

- LEGEND**
- FLOODWAY
 - 100 YEAR FLOODPLAIN
 - 500 YEAR FLOODPLAIN
 - 327 BASE FLOOD ELEVATION (100 YR. FLOOD)
 - CROSS SECTION NUMBER
 - 566 BY 100 REFERENCE DISTANCE ALONG SECTION
 - CROSS SECTION ALPHA IDENTIFIER



MAP COMPLETED JULY 8, 1992 BY BSI CONSULTANTS INC. W.O. No. S97-01

CONSTRUCTION RECORD		REFERENCES		Date	By	REVISIONS		App'd	BENCH MARK		SCALE	Office	Designed By	Drawn By	Checked By	Submitted	Approved	CITY OF SANTEE	ENGINEERING DEPARTMENT	Drawing No.
Contractor									COMPILED BY PHOTOGRAMMETRIC METHODS FROM PHOTOGRAPHY DATED APRIL 22, 1989.		Horizontal 1"=200'	Field	NB	JD	RCS	8-7-92	8-10-92	SAN DIEGO RIVER FLOOD STUDY		92-164
Inspector									HORIZONTAL & VERTICAL CONTROL IS BASED ON R.O.S. 11252		Vertical	Traffic	Plans Prepared Under Supervision Of	Date	8-4-92			SANTEE DISCHARGE RATES		Sheet 1 of 9
Date Completed													R.C.E. No. 43212	Expires	3-31-96					

230
P

240

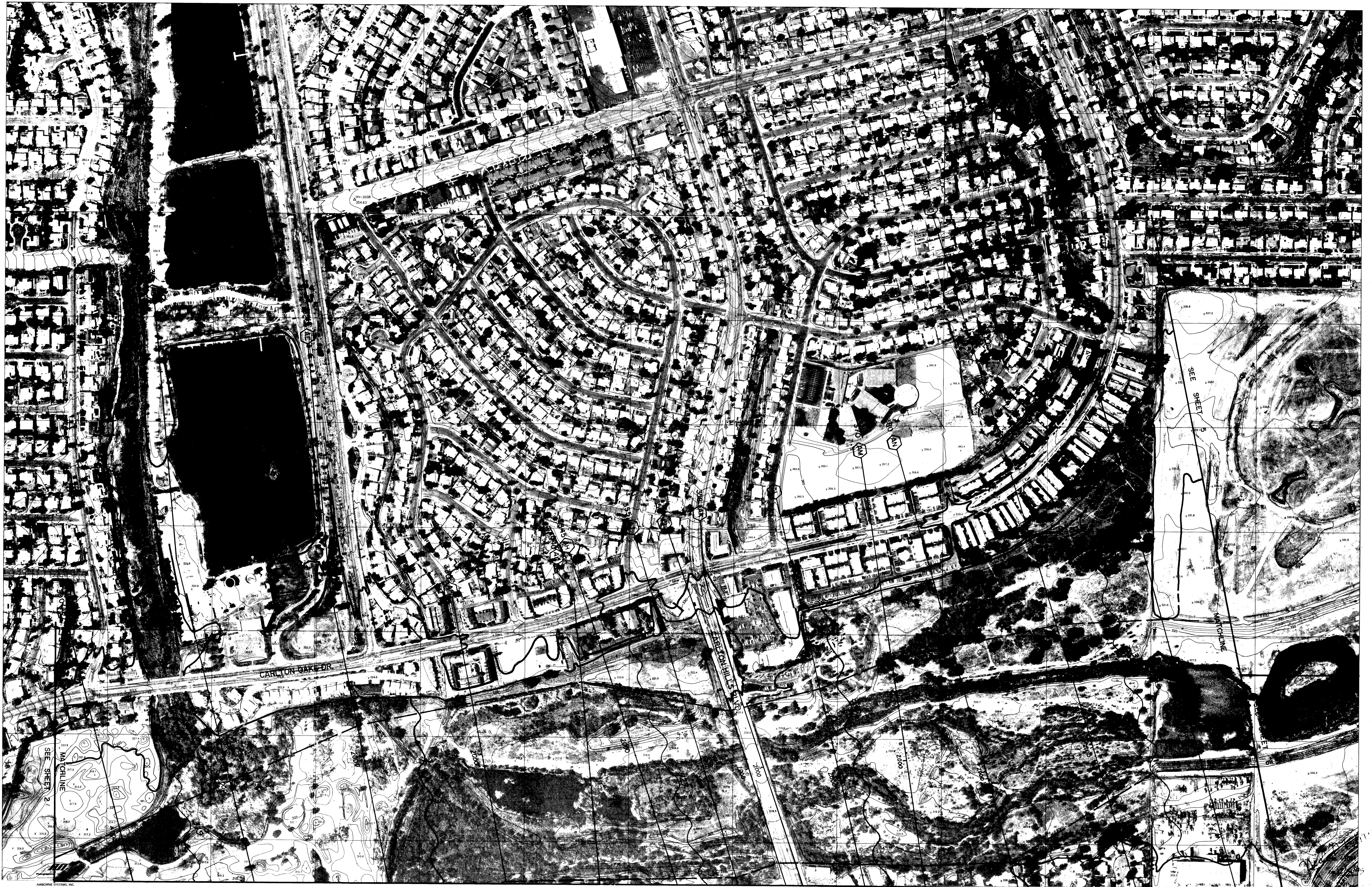
244



BSI
 Photogrammetric Systems, Inc.
 AIRBORNE SYSTEMS, INC.
 8000 W. CENTRAL EXPRESSWAY, SUITE 100
 DENVER, COLORADO 80231

MAP COMPLETED JULY 8, 1992 BY BSI CONSULTANTS INC. W.O.No. S 92-01

CONSTRUCTION RECORD		REFERENCES		Date	By	REVISIONS		App'd	BENCH MARK		SCALE	Office	Designed By	Drawn By	Checked By	Submitted	Approved	CITY OF SANTEE ENGINEERING DEPARTMENT		Drawing No.
Contractor _____									COMPILED BY PHOTOGRAMMETRIC METHODS FROM PHOTOGRAPHY DATED APRIL 22, 1989.		Horizontal 1"=200'	Field _____	N.B.	J.D.	R.C.S.	8-7-92	8-10-92	SAN DIEGO RIVER FLOOD STUDY		92-165
Inspector _____									HORIZONTAL & VERTICAL CONTROL IS BASED ON R.O.S. 11252		Vertical _____	Traffic _____	Plans Prepared Under Supervision Of		By _____	By _____	SANTEE DISCHARGE RATES		Sheet 2 of 9	
Date Completed _____													8-4-92		3-31-96		12725			
													43212		3-31-96		3-31-93			



SEE SHEET 4

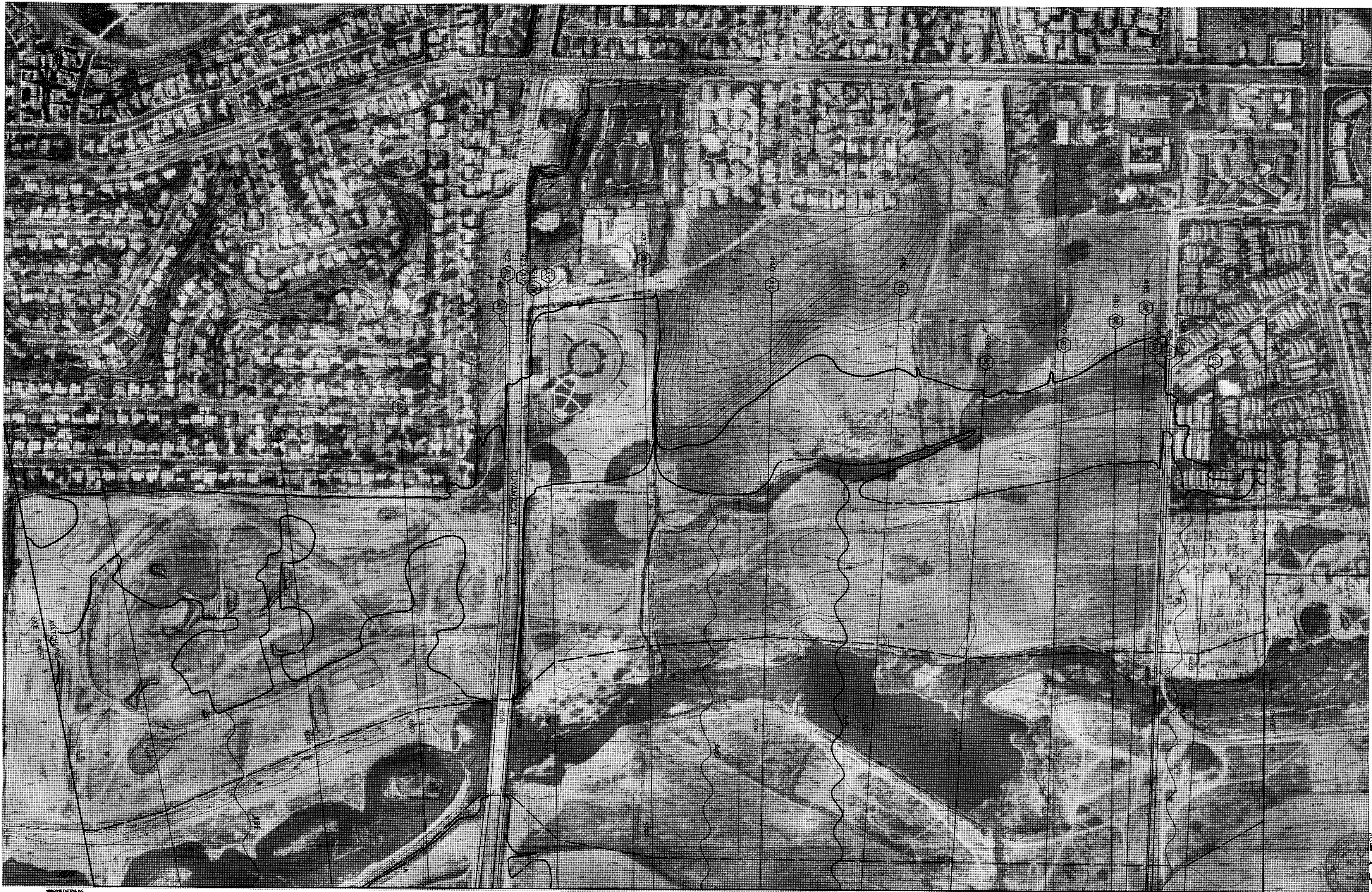
MAP COMPLETED JULY 8, 1992 BY BSI CONSULTANTS INC. W.O. No. S92-01

CONSTRUCTION RECORD		REFERENCES		Date	By	REVISIONS		App'd	BENCH MARK		SCALE		Office	Designed By	Drawn By	Checked By	Submitted		Approved		CITY OF SANTEE ENGINEERING DEPARTMENT		Drawing No.
Contractor									COMPILED BY PHOTOGRAMMETRIC METHODS FROM PHOTOGRAPHY DATED APRIL 22, 1989.		Horizontal 1"=200'			N.B.	J.D.	R.C.S.	By <i>[Signature]</i>		By <i>[Signature]</i>		SAN DIEGO RIVER FLOOD STUDY		92-166
Inspector									HORIZONTAL & VERTICAL CONTROL IS BASED ON R.O.S. 11252		Vertical						SENIOR CIVIL ENGINEER		ASST. DIRECTOR OF PUBLIC WORKS		SANTEE DISCHARGE RATES		Sheet 3 of 9
Date Completed														R.C.E. No. 43212	Date 6-4-92	Expires 3-31-96	R.C.E. No. 12725 Expires 3-31-93						



MAP COMPLETED JULY 8, 1992 BY BSI CONSULTANTS INC. W.O. No. S92-01

CONSTRUCTION RECORD		REFERENCES	Date	By	REVISIONS	Appd	BENCH MARK	SCALE	Office	Designed By	Drawn By	Checked By	Submitted	Approved	CITY OF SANTEE	ENGINEERING DEPARTMENT	Drawing No.
Contractor _____							COMPILED BY PHOTOGRAMMETRIC METHODS FROM PHOTOGRAPHY DATED APRIL 22, 1989.	Horizontal 1"=200'	Field _____	N.B.	J.D.	R.C.S.	By _____	By _____	SAN DIEGO RIVER FLOOD STUDY		92-167
Inspector _____							HORIZONTAL & VERTICAL CONTROL IS BASED ON R.O.S. 11252	Vertical _____	Traffic _____	Plans Prepared Under Supervision Of	Date	8-4-92	By _____	By _____	SANTEE DISCHARGE RATES		Sheet 4 of 9
Date Completed _____										R.C.E. No. 43212	Expires	3-31-96	Submitted _____	Approved B-10-92			
													By _____	By _____			
													SENIOR CIVIL ENGINEER	ASST. DIRECTOR OF PUBLIC WORKS			
													R.C.E. No. 12725	Expires	3-31-93		



SEE SHEET 6

MAP COMPLETED JULY 8, 1992 BY BSI CONSULTANTS INC. W.O. No. 592-01

CONSTRUCTION RECORD	
Contractor	
Inspector	
Date Completed	

REFERENCES	Date	By	REVISIONS	Appd

BENCH MARK
COMPILED BY PHOTOGRAMMETRIC METHODS FROM PHOTOGRAPHY DATED APRIL 22, 1989.
HORIZONTAL & VERTICAL CONTROL IS BASED ON R.O.S. 11252

SCALE	Office
Horizontal 1"=200'	
Vertical	

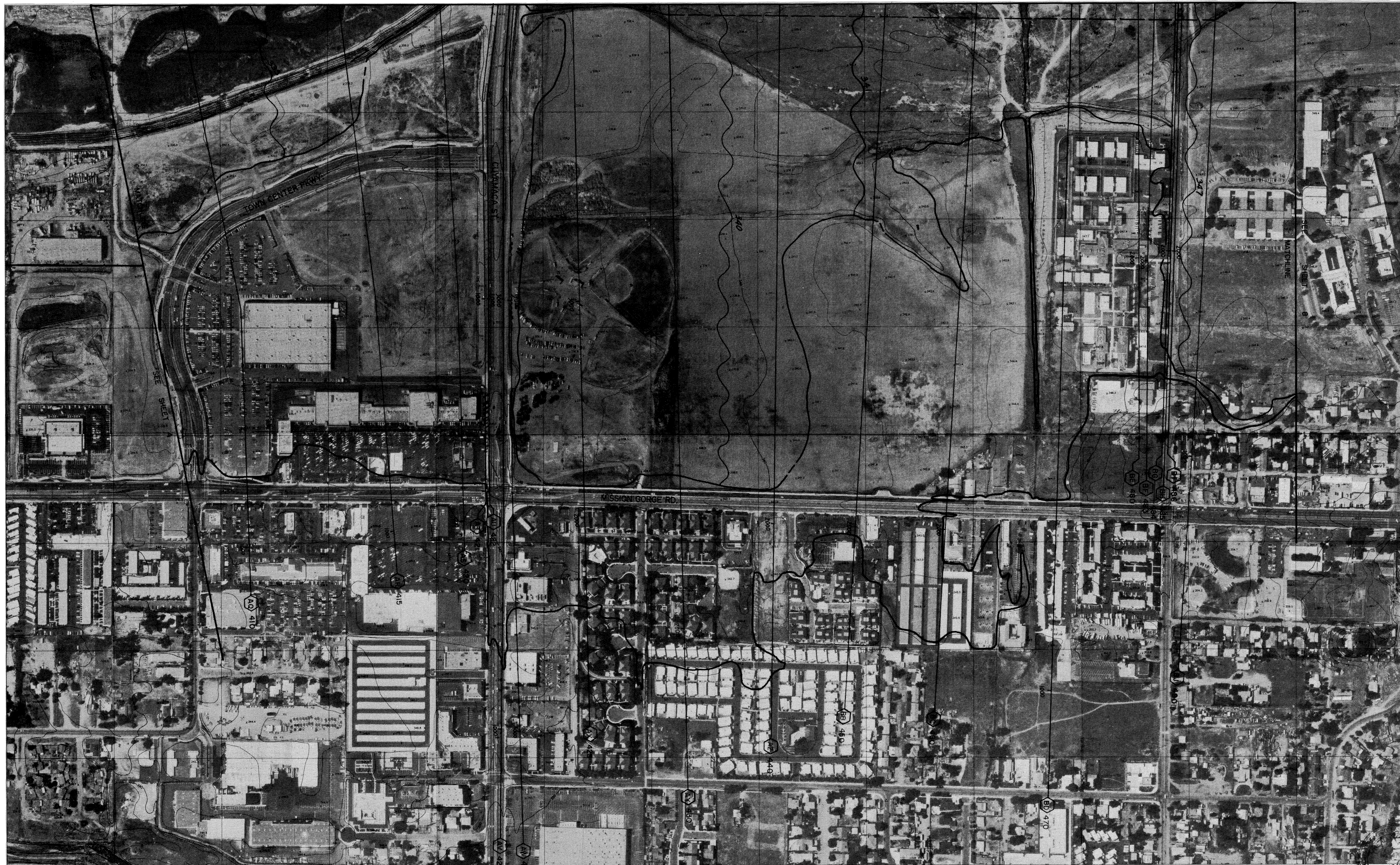
Designed By	Drawn By	Checked By
N.B.	J.D.	R.C.S.
Plans Prepared Under Supervision Of		
	Date	
R.C.E. No. 43212	8-4-92	3-31-96

Submitted 8-7-92	Approved 8-10-92
By <i>James M. Stapp</i> SENIOR CIVIL ENGINEER	By <i>James R. Wetherill</i> ASST. DIRECTOR OF PUBLIC WORKS R.C.E. No. 12725 Expires 3-31-93

CITY OF SANTEE ENGINEERING DEPARTMENT
 SAN DIEGO RIVER FLOOD STUDY
 SANTEE DISCHARGE RATES

Drawing No. 92-168
 Sheet 5 of 9





BSI
 Photogrammetry Computer Graphics
 AIRBORNE SYSTEMS, INC.
 1871 BERRY LANE, PASADENA, CALIFORNIA 92363



MAP COMPLETED JULY 8, 1992 BY BSI CONSULTANTS INC. W.O. No. 92-01

CONSTRUCTION RECORD		REFERENCES	Date	By	REVISIONS	App'd	BENCH MARK		SCALE	Office	Designed By	Drawn By	Checked By	Submitted	Approved	CITY OF SANTEE ENGINEERING DEPARTMENT		Drawing No.
Contractor							COMPILED BY PHOTOGRAMMETRIC METHODS FROM PHOTOGRAPHY DATED APRIL 22, 1989.		Horizontal 1"=200'	Field	NB	JD	RCS	8-7-92	8-10-92	SAN DIEGO RIVER FLOOD STUDY SANTEE DISCHARGE RATES		92-169
Inspector							HORIZONTAL & VERTICAL CONTROL IS BASED ON R.O.S. 11252		Vertical	Traffic	Plans Prepared Under Supervision Of			By <i>[Signature]</i>	By <i>[Signature]</i>			Sheet 6 of 9
Date Completed											R.C.E. No. 43212	Expires 3-31-96		ASST. DIRECTOR OF PUBLIC WORKS	R.C.E. No. 12725			



SEE SHEET 5

SEE SHEET 8

MAP COMPLETED JULY 8, 1992 BY BSI CONSULTANTS INC. W.O. No. S92-01

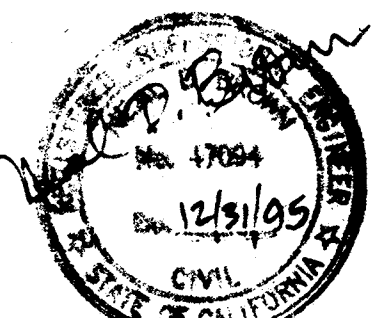
CONSTRUCTION RECORD		REFERENCES		Date	By	REVISIONS		App'd	BENCH MARK			SCALE		Office	Designed By	Drawn By	Checked By	Submitted		Approved		CITY OF SANTEE ENGINEERING DEPARTMENT		Drawing No.
Contractor									COMPILED BY PHOTOGRAMMETRIC METHODS FROM PHOTOGRAPHY DATED APRIL 22, 1989.			Horizontal			NB	JD	RCS	5-1-92		8-10-92		SAN DIEGO RIVER FLOOD STUDY		92-170
Inspector									HORIZONTAL & VERTICAL CONTROL IS BASED ON R.O.S. 11252			Vertical		Field	Plans Prepared Under Supervision Of		By <i>George M. ...</i>		By <i>...</i>		SANTEE DISCHARGE RATES		Sheet 7 of 9	
Date Completed												Traffic		R.C.E. No.	Date	Expires	SENIOR CIVIL ENGINEER		ASST. DIRECTOR OF PUBLIC WORKS					
														43212	8-4-92	3-31-96	R.C.E. No. 12725 Expires 3-31-93							

SEE SHEET 5

SEE SHEET 6

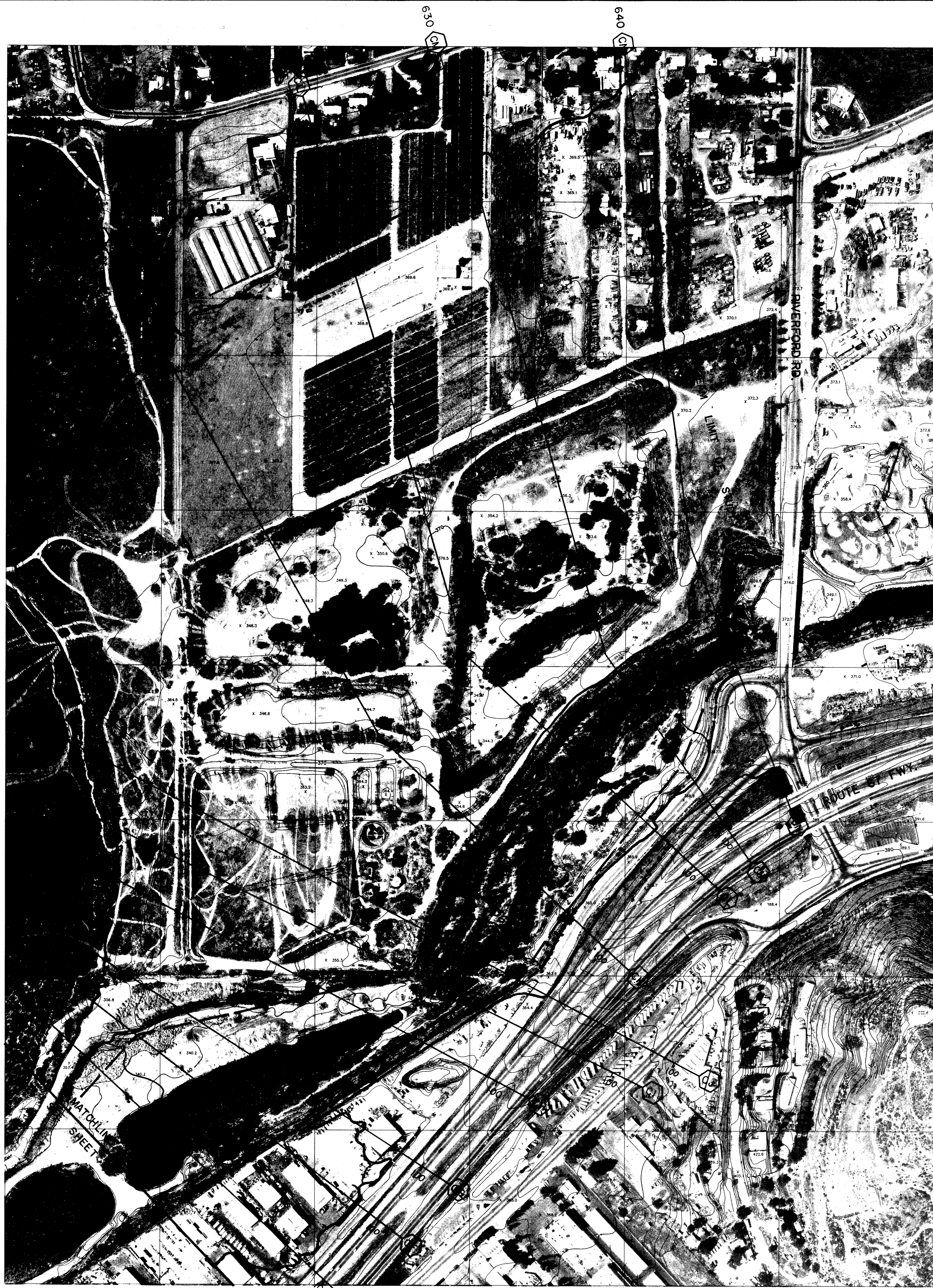


BSI
Photogrammetry Computer Graphics
AIRBORNE SYSTEMS, INC.
(80) Borealis Ave. Foster, California 95020



MAP COMPLETED JULY 8, 1992 BY BSI CONSULTANTS INC. W.O. No. 592-01

CONSTRUCTION RECORD		REFERENCES	Date	By	REVISIONS	App'd	BENCH MARK	SCALE	Office	Designed By	Drawn By	Checked By	Submitted	Approved	CITY OF SANTEE	ENGINEERING DEPARTMENT	Drawing No.
Contractor							COMPILED BY PHOTOGRAMMETRIC METHODS FROM PHOTOGRAPHY DATED APRIL 22, 1989.	Horizontal 1"=200'	Field	N.B.	J.D.	R.C.S.	8-7-92	8-10-92	SAN DIEGO RIVER FLOOD STUDY SANTEE DISCHARGE RATES		92-171
Inspector							HORIZONTAL & VERTICAL CONTROL IS BASED ON R.O.S. 11292	Vertical	Traffic	Plans Prepared Under Supervision Of			By <i>Craig M. Stambaugh</i>	By <i>Craig M. Stambaugh</i>			Sheet 8 of 9
Date Completed										R.C.E. No. 43212	Date 8-4-92		By <i>Craig M. Stambaugh</i>	ASST. DIRECTOR OF PUBLIC WORKS R.C.E. No. 12725 Expires 3-31-93			



AIRBORNE SYSTEMS, INC.

Lead T. Blum
 12/2/92

MAP COMPLETED JULY 8, 1992 BY BSI CONSULTANTS INC. W.O. No. 892-01

CONSTRUCTION RECORD		REFERENCES		Date	By	REVISIONS		Appd	BENCH MARK		SCALE		Office	Designed By	Drawn By	Checked By	Submitted	Approved	CITY OF SANTEE ENGINEERING DEPARTMENT		Drawing No.
Contractor									COMPILED BY PHOTOGAMMETRIC METHODS FROM PHOTOGRAPHY DATED APRIL 22, 1989.		Horizontal 1"=200'		Field	NB	JD	RCS	<i>P. J. ...</i>	<i>B. J. ...</i>	SAN DIEGO RIVER FLOOD STUDY SANTEE DISCHARGE RATES		92-172
Inspector									HORIZONTAL & VERTICAL CONTROL IS BASED ON R.O.S. 11252		Vertical		Traffic	Plans Prepared Under Supervision Of	Date	8-4-92	By <i>Sam A. ...</i>	ASST. DIRECTOR OF PUBLIC WORKS			Sheet 9 of 9
Date Completed														R.C.E. No. 43212	Expires	3-31-96	By <i>Sam A. ...</i>	R.C.E. No. 12725	Expires	3-31-93	