

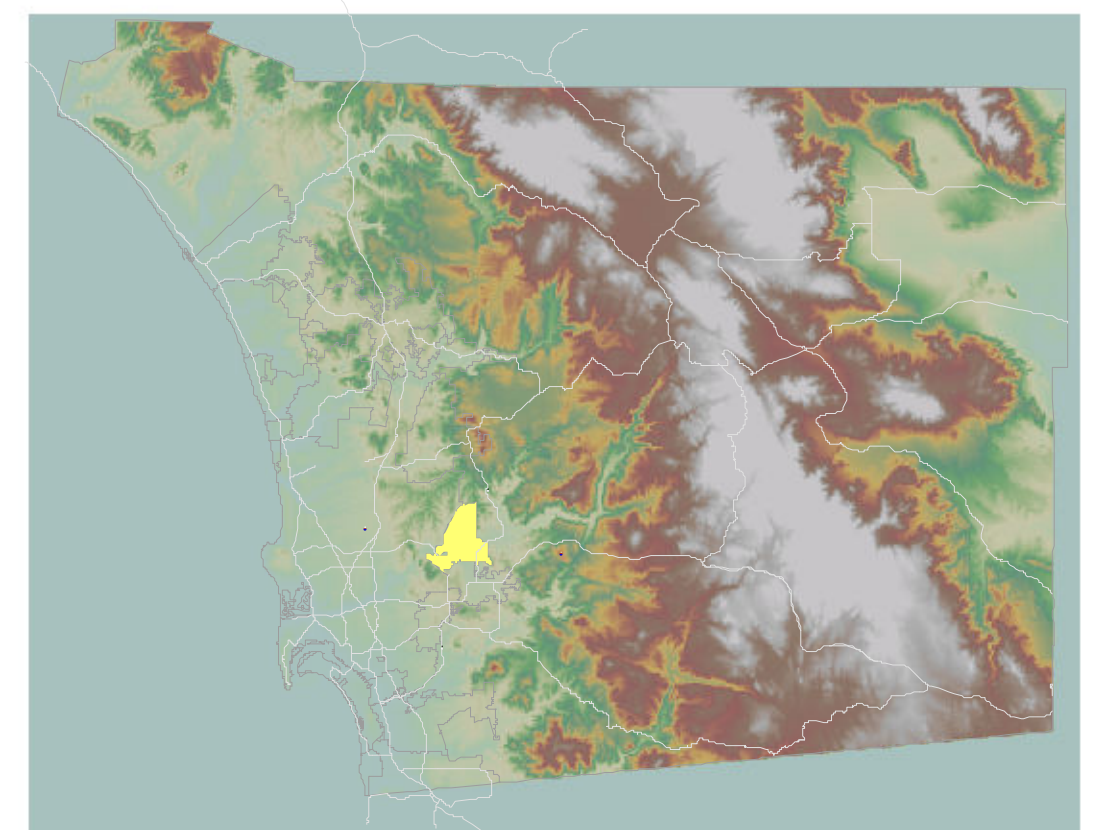


City of Santee Land Use Map



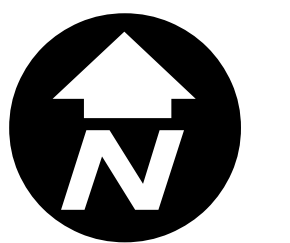
Updates:
GPA Resolution #71-2007 passed on 9/12/07

City Limits



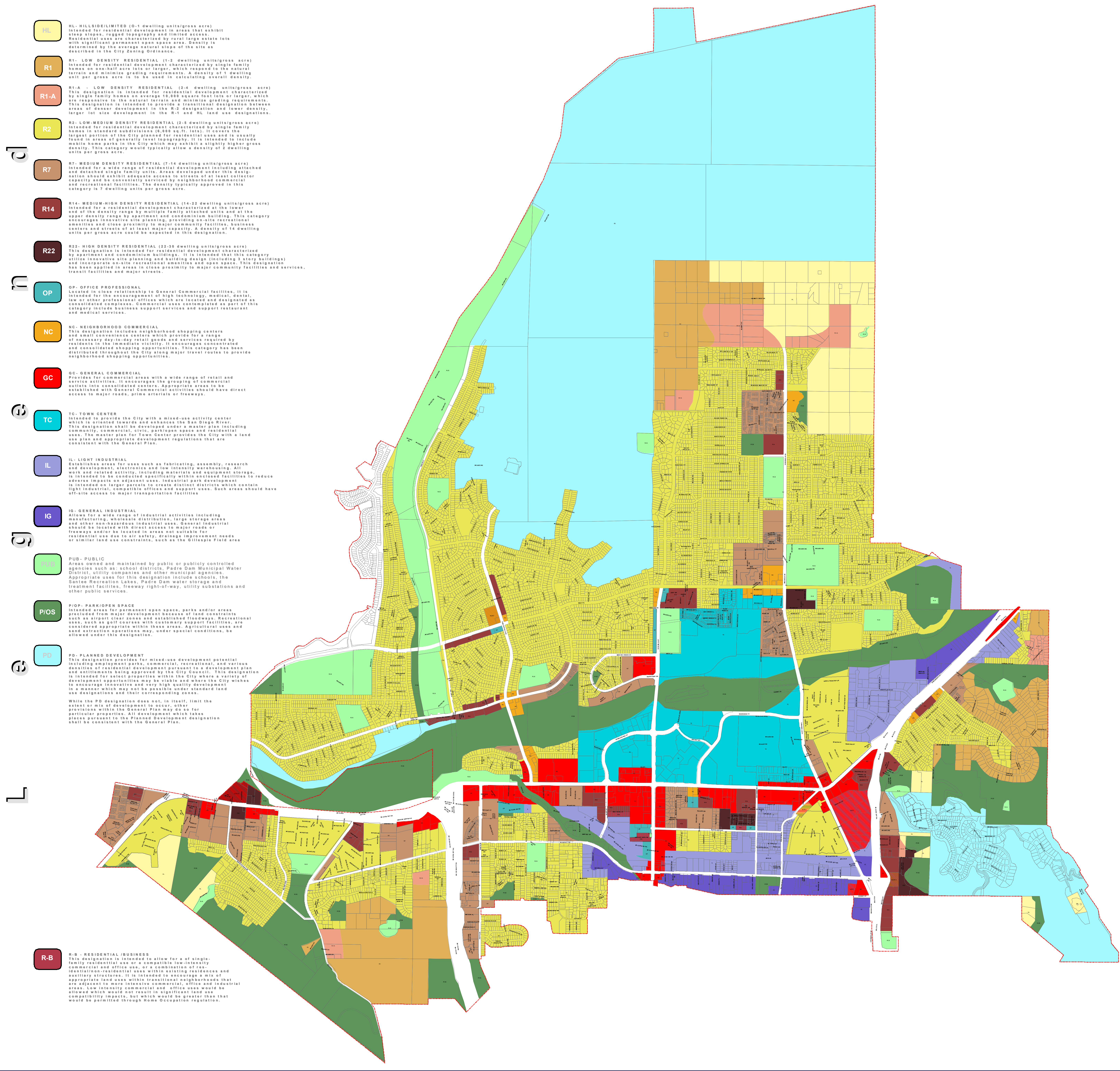
The City of Santee
10601 Magnolia Avenue
Santee, California 92071-1222
(619) 255-4100

Adopted: August 27, 2003
Resolution: ES-2003
Updated: July 2017
File: GPL02017.mxd



Feet
0 500 1,000 2,000 3,000 4,000

Notes: The scale and configuration of this map are approximate only and are not intended as a guide for design or survey work.
This map is periodically updated. All information should be verified with the City of Santee Development Services Department.



HL HL - HILLSIDE/LIMITED (0-1 dwelling units/gross acre)
Intended for residential development in areas that exhibit steep slopes, rugged topography and limited access. Residential uses are characterized by rural large estate lots with significant permanent open space areas. Density is determined by the average natural slope of the site as described in the City Zoning Ordinance.

R1 R1 - LOW DENSITY RESIDENTIAL (1-2 dwelling units/gross acre)
Intended for residential development characterized by single family homes on one-half acre lots or larger, which respond to the natural terrain and minimize grading requirements. A density of 1 dwelling unit per gross acre is to be used in calculating overall density.

R1-A R1-A - LOW DENSITY RESIDENTIAL (2-4 dwelling units/gross acre)
This designation is intended for residential development characterized by single family homes on average 10,000 square foot lots or larger, which are responsive to the natural terrain and minimize grading requirements. This designation is intended to provide a transitional designation between areas of denser development in the R-2 designation and lower density, larger lot size development in the R-1 and HL land use designations.

R2 R2 - LOW-MEDIUM DENSITY RESIDENTIAL (2-5 dwelling units/gross acre)
Intended for residential development characterized by single family homes in standard subdivisions (5,000 sq. ft. lots). It covers the largest portion of the City planned for residential uses and is usually found in areas of generally level topography. It is intended to include mobile home parks in the City which may exhibit a slightly higher gross density. This category would typically allow a density of 2 dwelling units per gross acre.

R7 R7 - MEDIUM DENSITY RESIDENTIAL (7-14 dwelling units/gross acre)
Intended for a wide range of residential development including attached and detached single family units. Areas developed under this designation should exhibit adequate access to streets of at least collector capacity and be conveniently serviced by neighborhood commercial and recreational facilities. The density typically approved in this category is 7 dwelling units per gross acre.

R14 R14 - MEDIUM-HIGH DENSITY RESIDENTIAL (14-22 dwelling units/gross acre)
Intended for a residential development characterized at the lower end of the density range by multiple family attached units and at the upper density range by apartment and condominium building. This category encourages innovative site planning, providing on-site recreational amenities and close proximity to major community facilities, business centers and streets of at least major capacity. A density of 14 dwelling units per gross acre could be expected in this designation.

R22 R22 - HIGH DENSITY RESIDENTIAL (22-30 dwelling units/gross acre)
This designation is intended for residential development characterized by condominium and loft buildings. It is intended that category utilize innovative site planning and building design (including 3 story buildings) and incorporate on-site recreational amenities and open space. This designation has been applied in areas in close proximity to major community facilities and services, transit facilities and major streets.

OP OP - OFFICE PROFESSIONAL
Located in close relationship to General Commercial facilities, it is intended for the encouragement of high technology, medical, dental, law or other professional offices which are located and designated as consolidated complexes. Commercial uses contemplated as part of this category include business support services and support restaurant and medical services.

NC NC - NEIGHBORHOOD COMMERCIAL
This designation includes neighborhood shopping centers and small convenience centers which provide for a range of neighborhood retail goods and services required by residents in the immediate vicinity. It encourages concentrated and concentrated shopping opportunities. This category has been distributed throughout the City along major travel routes to provide neighborhood shopping opportunities.

GC GC - GENERAL COMMERCIAL
Provides for commercial areas with a wide range of retail and service activities. It encourages the grouping of commercial outlets into consolidated centers. Appropriate areas to be established with General Commercial activities should have direct access to major roads, prime arterials or freeways.

TC TC - TOWN CENTER
Intended to provide the City with a mixed-use activity center located towards and adjacent to the San Diego River. This designation shall be developed under a master plan including community, commercial, civic, park/open space and residential uses. The master plan for Town Center provides the City with a land use plan and appropriate development regulations that are consistent with the General Plan.

IL IL - LIGHT INDUSTRIAL
Establishes areas for uses such as fabricating, assembly, research and development, electronics and low intensity warehousing. All work and related activity, including materials and equipment storage, is intended to be conducted specifically within enclosed facilities to reduce adverse impacts on adjacent uses. Industrial park development is intended on larger parcels to create distinct districts which contain light industrial, compatible offices and support uses. Such areas should have off-site access to major transportation facilities.

IG IG - GENERAL INDUSTRIAL
Allows for a wide range of industrial activities including manufacturing, wholesaling, distribution, large storage areas and other non-hazardous industrial uses. General Industrial should be located in areas with direct access to major roads or freeways and/or be located in areas not suitable for residential use due to air safety, drainage improvement needs or similar land use constraints, such as the Gillespie Field area.

PUB PUB - PUBLIC
Areas owned and maintained by public or publicly controlled agencies such as: school districts, Padre Dam Municipal Water District, utility companies and other municipal agencies. Appropriate uses for this designation include schools, the Santee Recreation Lakes, Padre Dam water storage and treatment facilities, freeway right-of-way, utility substations and other public services.

P/OS P/OS - PARK/OPEN SPACE
Intended areas for permanent open space, parks and/or areas precluded from major development because of land constraints such as airport clear zones and established floodways. Recreational uses, such as golf courses with customary support facilities, are considered appropriate within these areas. Agricultural uses and land extraction operations may, under special conditions, be allowed under this designation.

PD PD - PLANNED DEVELOPMENT
This designation provides for mixed-use development potential including employment parks, commercial, recreational, and various densities of residential development pursuant to a development plan and entitlements being approved by the City Council. This designation is intended for select properties within the City where a variety of development opportunities may be viable and where the City wishes to encourage innovative and very high quality development in a manner which may not be possible under standard land use designations and their corresponding zones.

While the PD designation does not, in itself, limit the extent or mix of development to occur, other provisions within the General Plan may do so for particular properties. All development which takes place pursuant to the Planned Development designation shall be consistent with the General Plan.

R-B R-B - RESIDENTIAL/BUSINESS
This designation is intended to allow for a single-family residential use or a compatible low-intensity commercial and office use, or a combination of residential/non-residential uses within existing residences and auxiliary structures. It is intended to encourage a mix of appropriate land uses within transitional neighborhoods that are adjacent to more intensive commercial, office and industrial areas. Low intensity commercial and office uses would be allowed which would not result in significant land use compatibility impacts, but which would be greater than that would be permitted through Home Occupation regulation.