

at&t

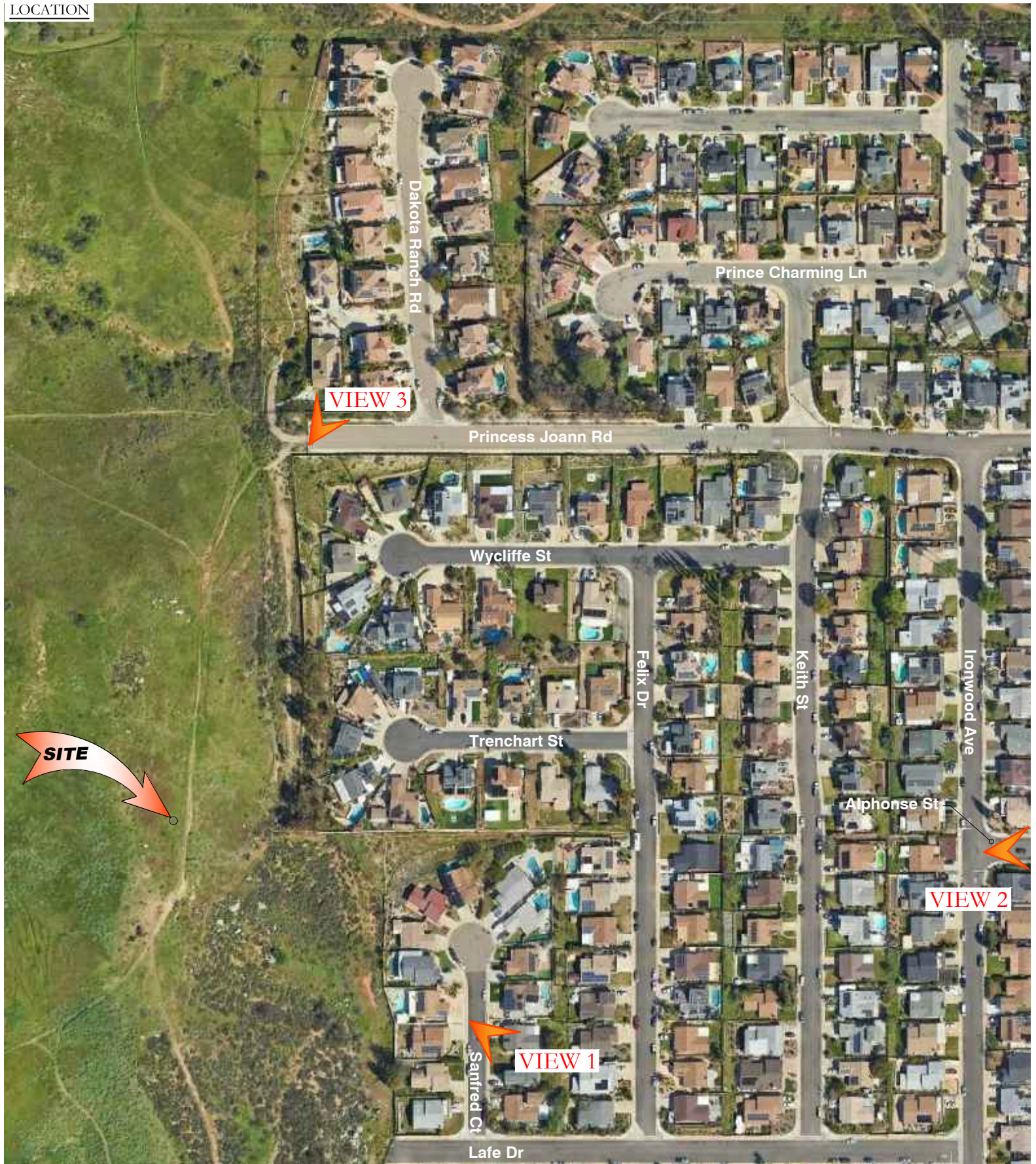
CAL02862 PRINCESS JOANN ROAD

10099 PRINCESS JOANN RD.,
SANTEE, CA 92071

MD7 10590 WEST OCEAN
AIR DRIVE, SUITE 250
SAN DIEGO, CA 92130

TELECOM
MANAGEMENT GROUP
Solutions Done Right

LOCATION





at&t

CAL02862
PRINCESS JOANN ROAD
10102 1/3 PRINCESS JOANN RD.,
SANTEE, CA 92071

MD7 10590 WEST OCEAN
AIR DRIVE, SUITE 250
SAN DIEGO, CA 92130

TELECOM
MANAGEMENT GROUP
Solutions Done Right

EXISTING



PROPOSED



(N) AT&T 8'-0" HIGH CMU WALL ENCLOSURE, TAN SPLIT-FACE TO MATCH NEARBY BUILDING AND FENCE DOWN THE STREET

(N) AT&T PANEL ANTENNAS WITHIN THE (N) 41'-0" TALL FAUX MONO-EUCALYPTUS TREE

(N) LIVE TREES AND SHRUBS PER LANDSCAPE PLAN

VIEW 1

SOUTHEAST VIEW LOOKING NORTHWEST



at&t

CAL02862 PRINCESS JOANN ROAD

10102 1/3 PRINCESS JOANN RD.,
SANTEE, CA 92071

MD7 10590 WEST OCEAN
AIR DRIVE, SUITE 250
SAN DIEGO, CA 92130

TELECOM
MANAGEMENT GROUP
Solutions Done Right

EXISTING



PROPOSED



(N) AT&T PANEL ANTENNAS
WITHIN THE (N) 41'-0" TALL
FAUX MONO-EUCALYPTUS
TREE

(N) AT&T 8'-0" HIGH CMU
WALL ENCLOSURE, TAN
SPLIT-FACE TO MATCH
NEARBY BUILDING AND
FENCE DOWN THE STREET

(N) LIVE TREES AND SHRUBS
PER LANDSCAPE PLAN

VIEW 2
EAST VIEW LOOKING WEST



at&t

CAL02862
PRINCESS JOANN ROAD
10102 1/3 PRINCESS JOANN RD.,
SANTEE, CA 92071

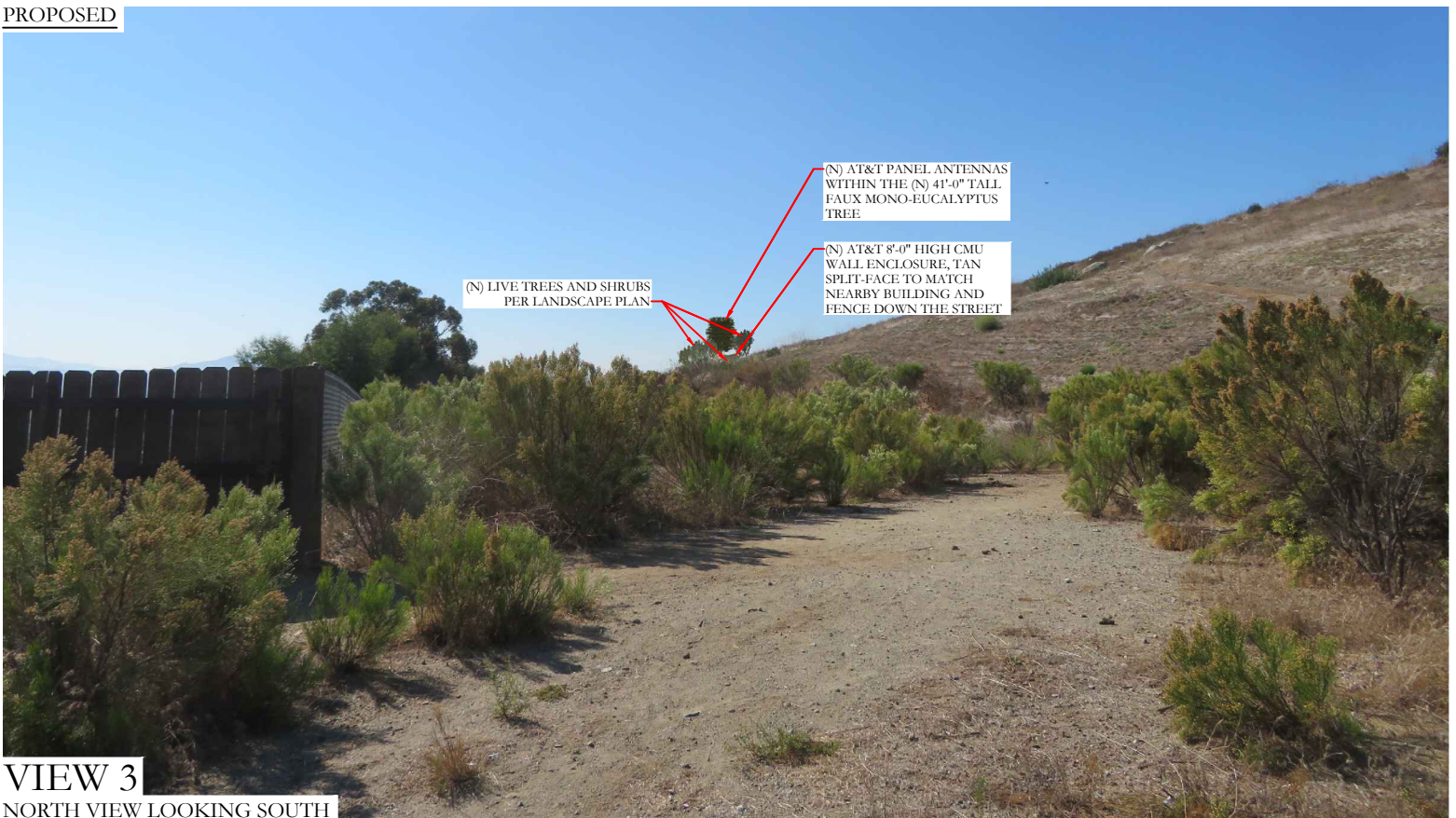
MD7 10590 WEST OCEAN
AIR DRIVE, SUITE 250
SAN DIEGO, CA 92130

TELECOM
MANAGEMENT GROUP
Solutions Done Right

EXISTING



PROPOSED



(N) LIVE TREES AND SHRUBS
PER LANDSCAPE PLAN

(N) AT&T PANEL ANTENNAS
WITHIN THE (N) 41'-0" TALL
FAUX MONO-EUCALYPTUS
TREE

(N) AT&T 8'-0" HIGH CMU
WALL ENCLOSURE, TAN
SPLIT-FACE TO MATCH
NEARBY BUILDING AND
FENCE DOWN THE STREET

VIEW 3

NORTH VIEW LOOKING SOUTH