



# A Bold New Transportation Vision in 5 Big Moves

# A Key Moment for the Region



Mid-Coast Trolley

# Emerging Technologies



# Worsening Congestion

## Population

2050 4.0 million

20%  
↑

2018 3.3 million

## VMT

2050 103 million

24%  
↑

2018 84 million



# The Law of the Land



19%

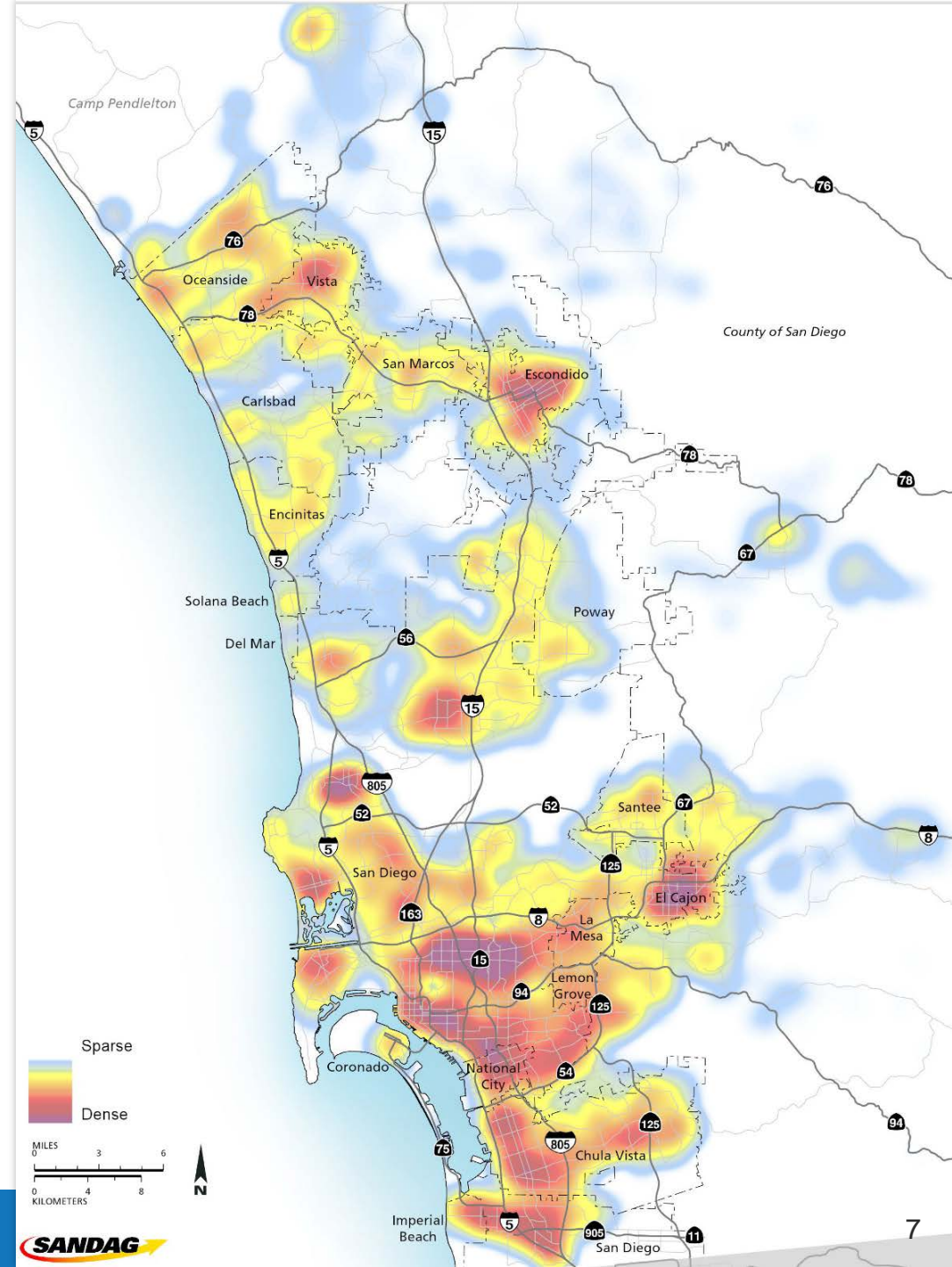
- California Senate Bill 375
- Federal Clean Air Act

# A Bold New Vision



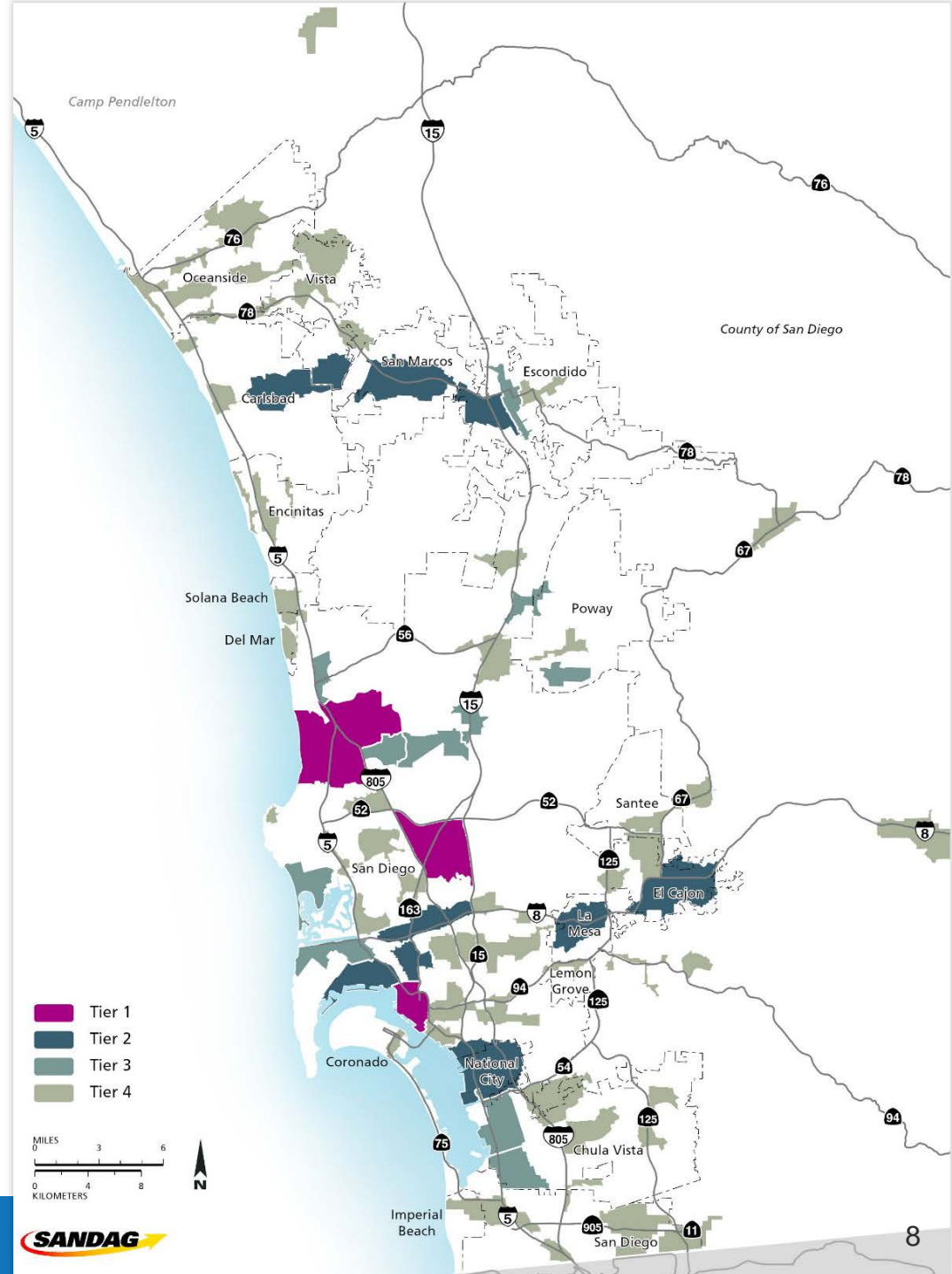
# Where People Live Today

- 3.3 million residents
  - 700,000 more expected by 2050
- Nation's 5<sup>th</sup> most populous county
- Busiest land port in the western hemisphere
- 84 million VMT daily
  - 24% growth expected by 2050



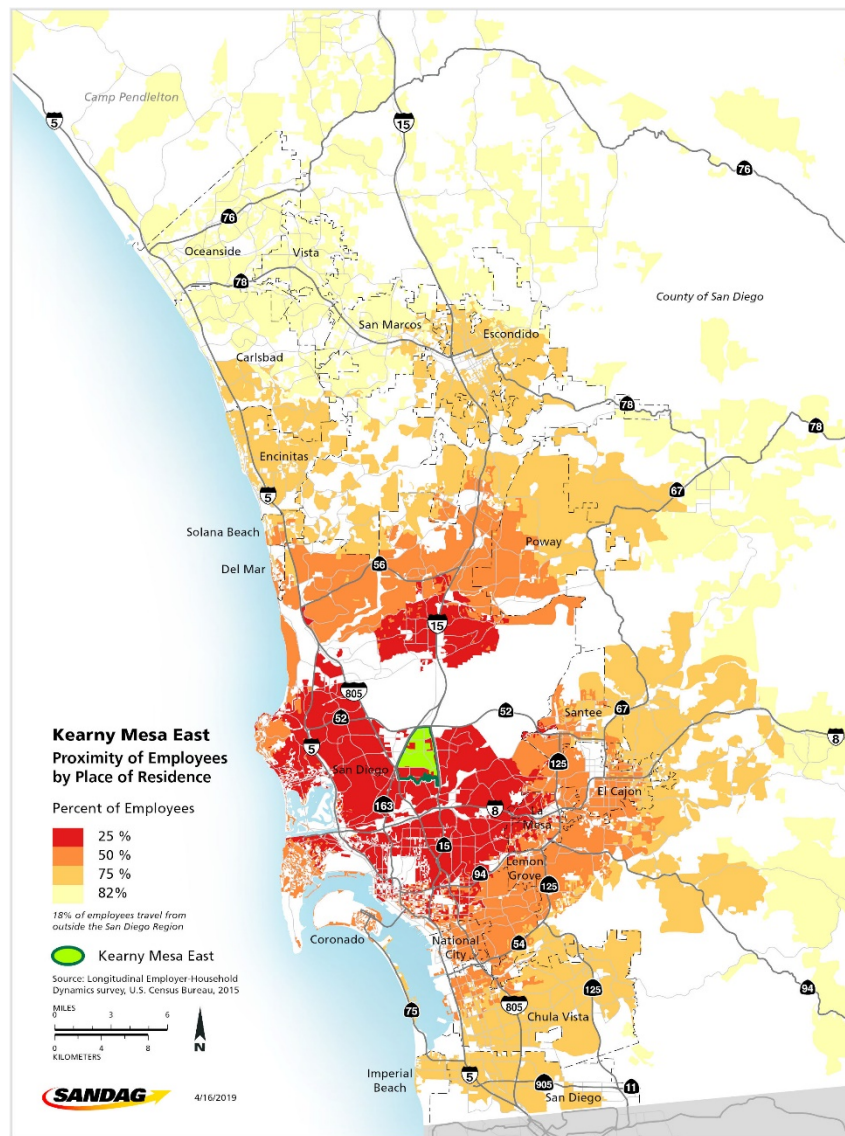
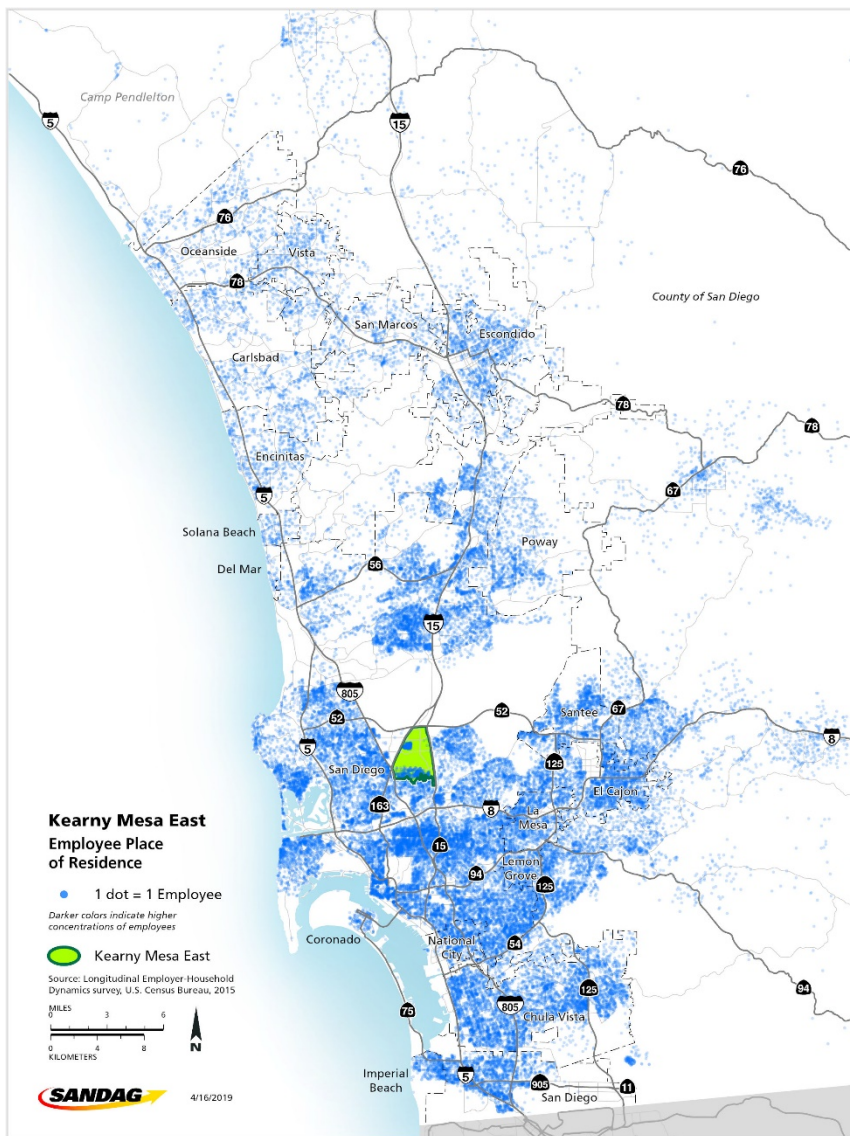
# Where People Work

- \$232 billion economy
- The region would rank 26<sup>th</sup> if it were a state
- Positioned for the 21<sup>st</sup> century in biotech and other innovative sectors
- 1.5 million jobs regionwide



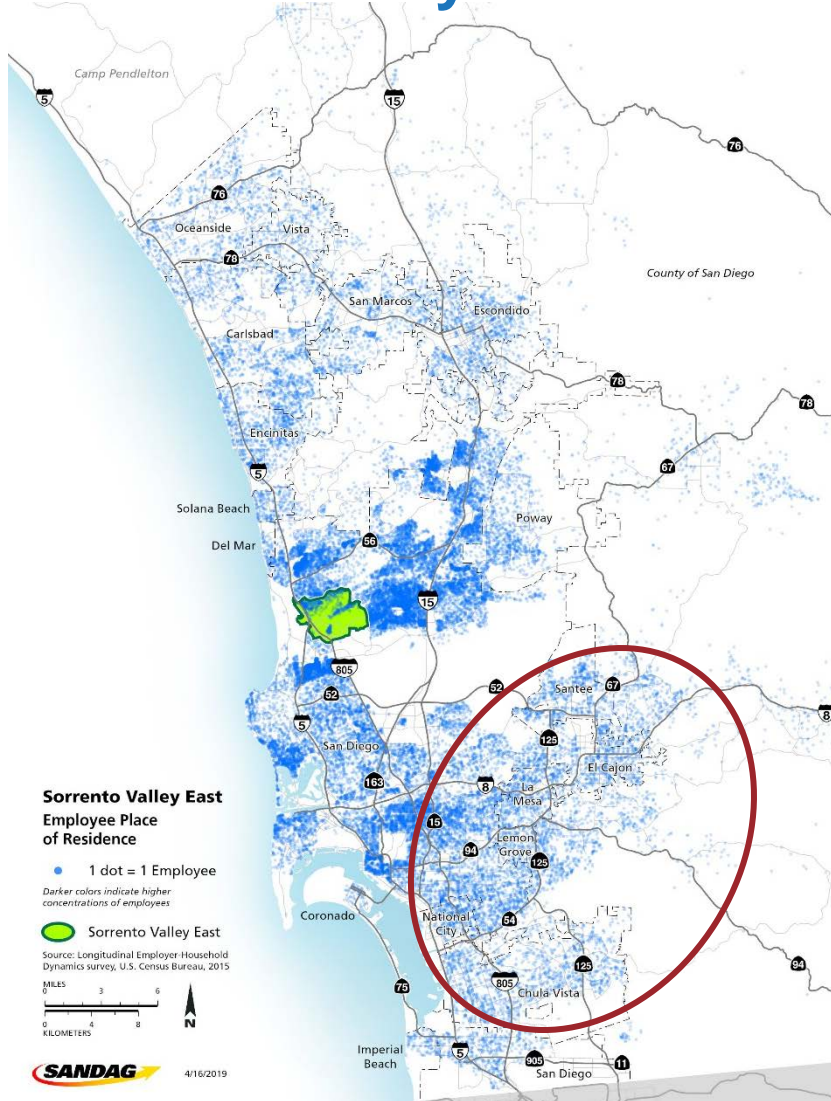


# Kearny Mesa East Employment Center

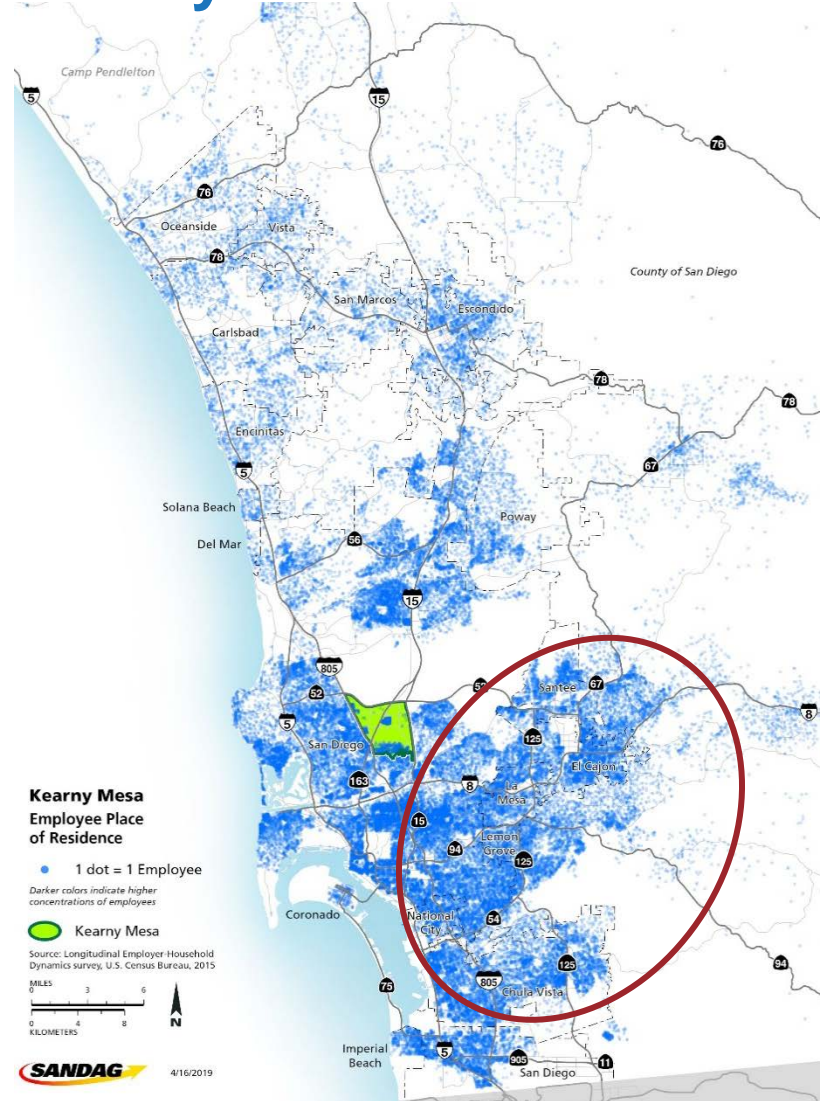


# Largest Employment Centers

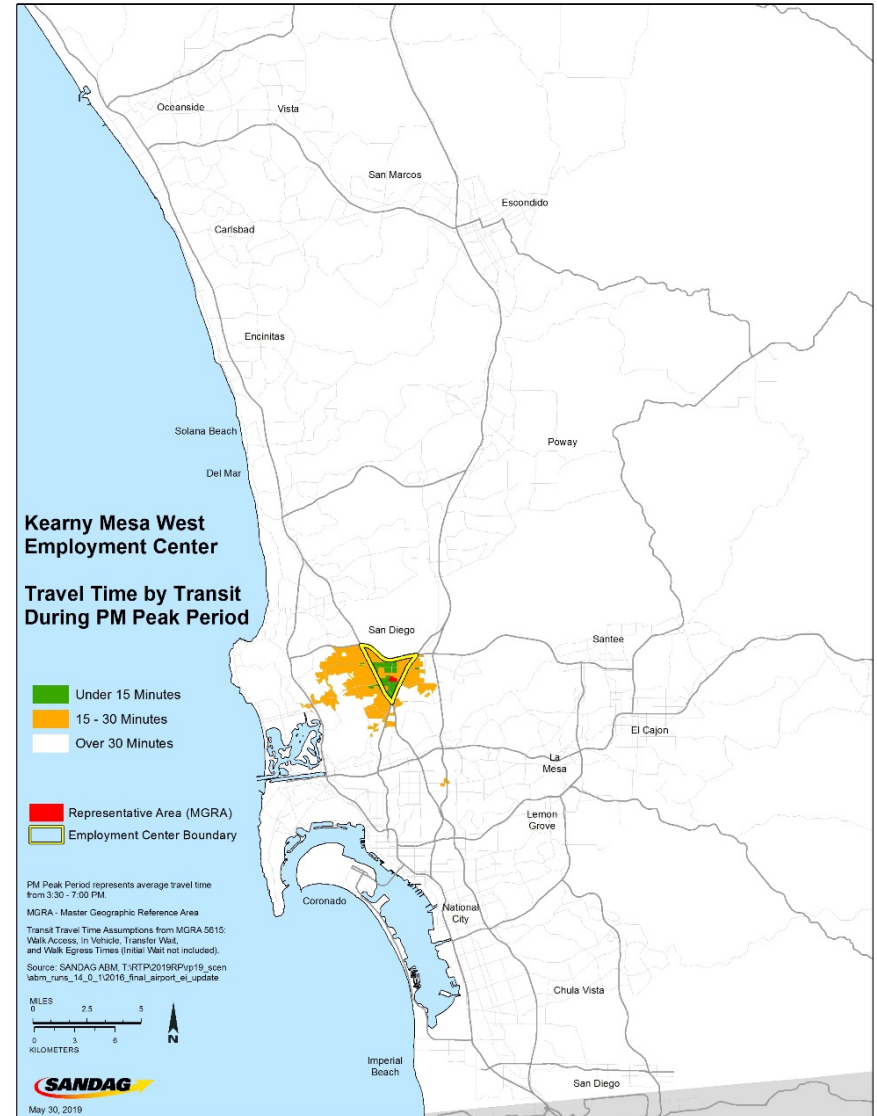
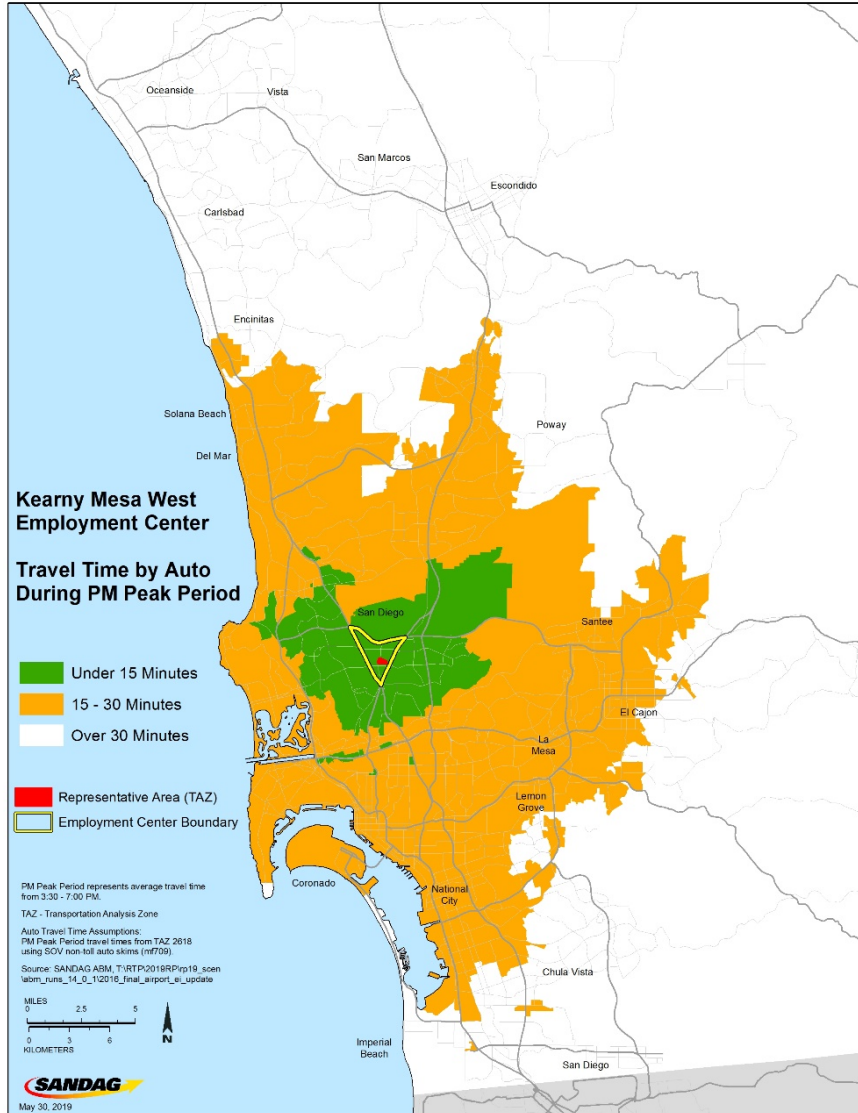
## Sorrento Valley



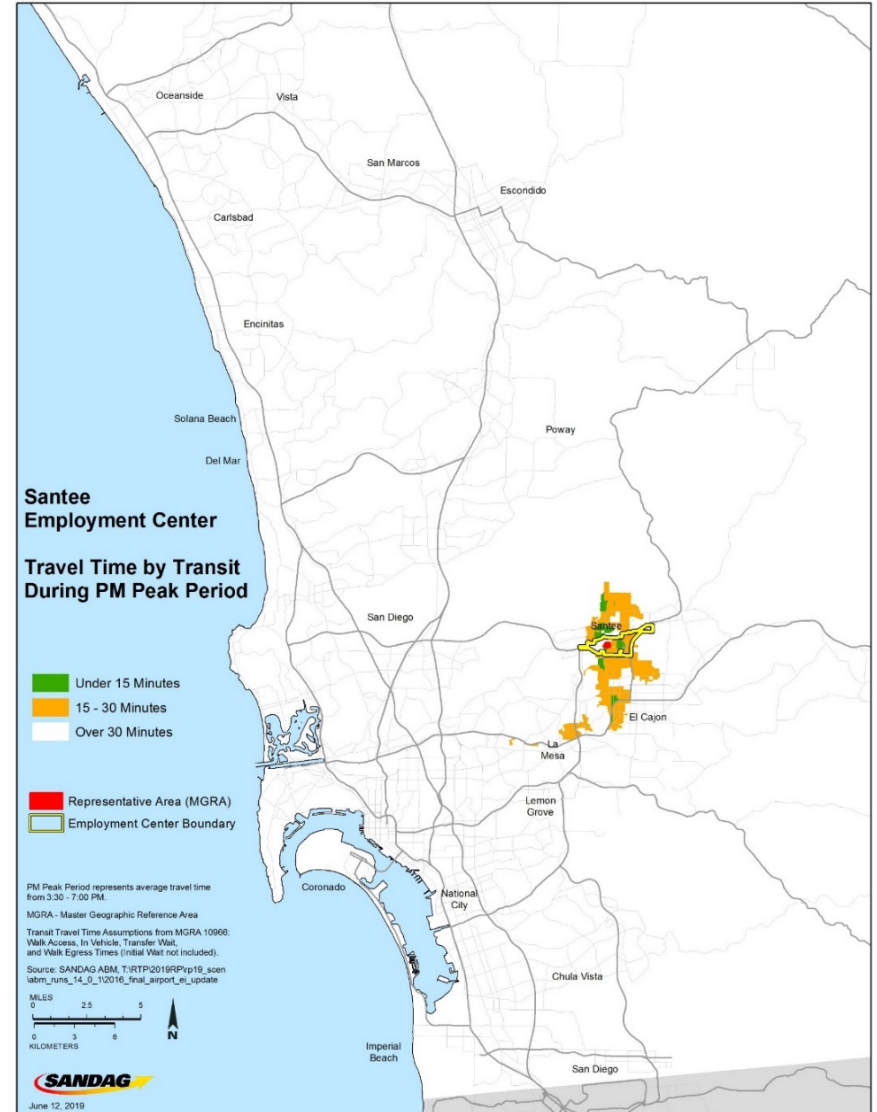
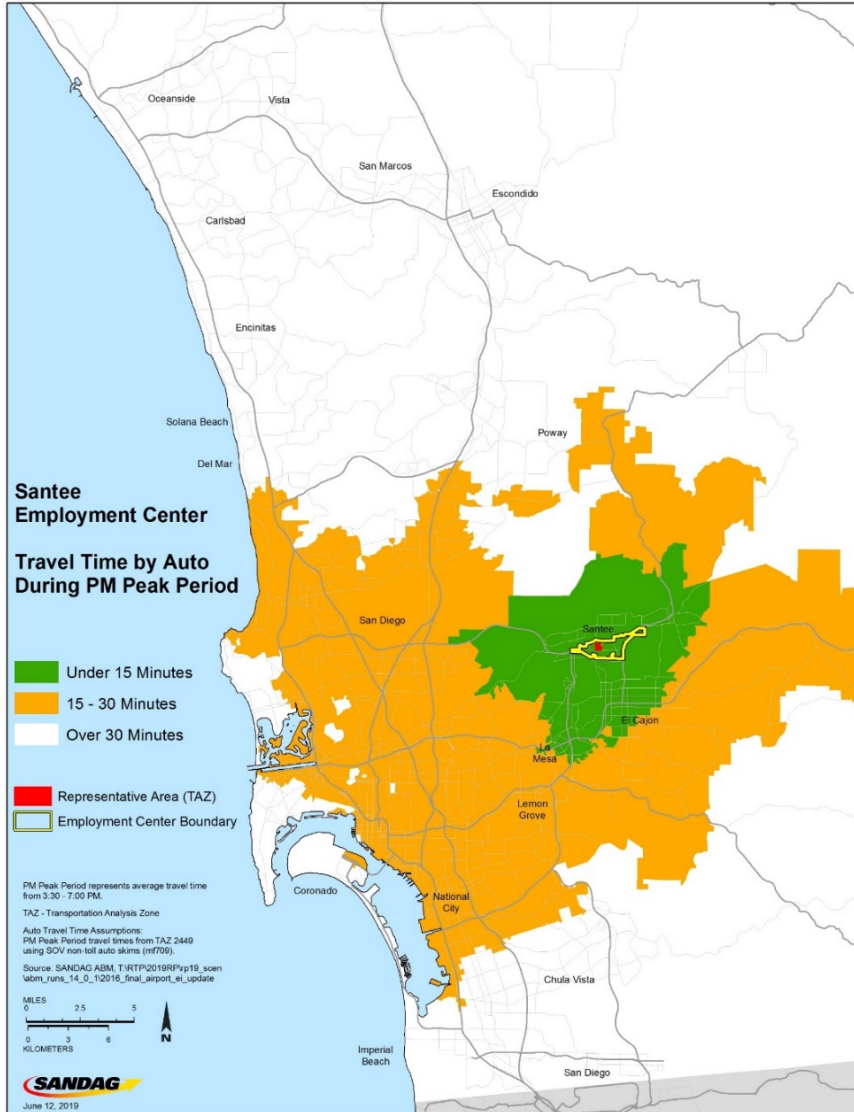
## Kearny Mesa



# Kearny Mesa Peak Period Travel

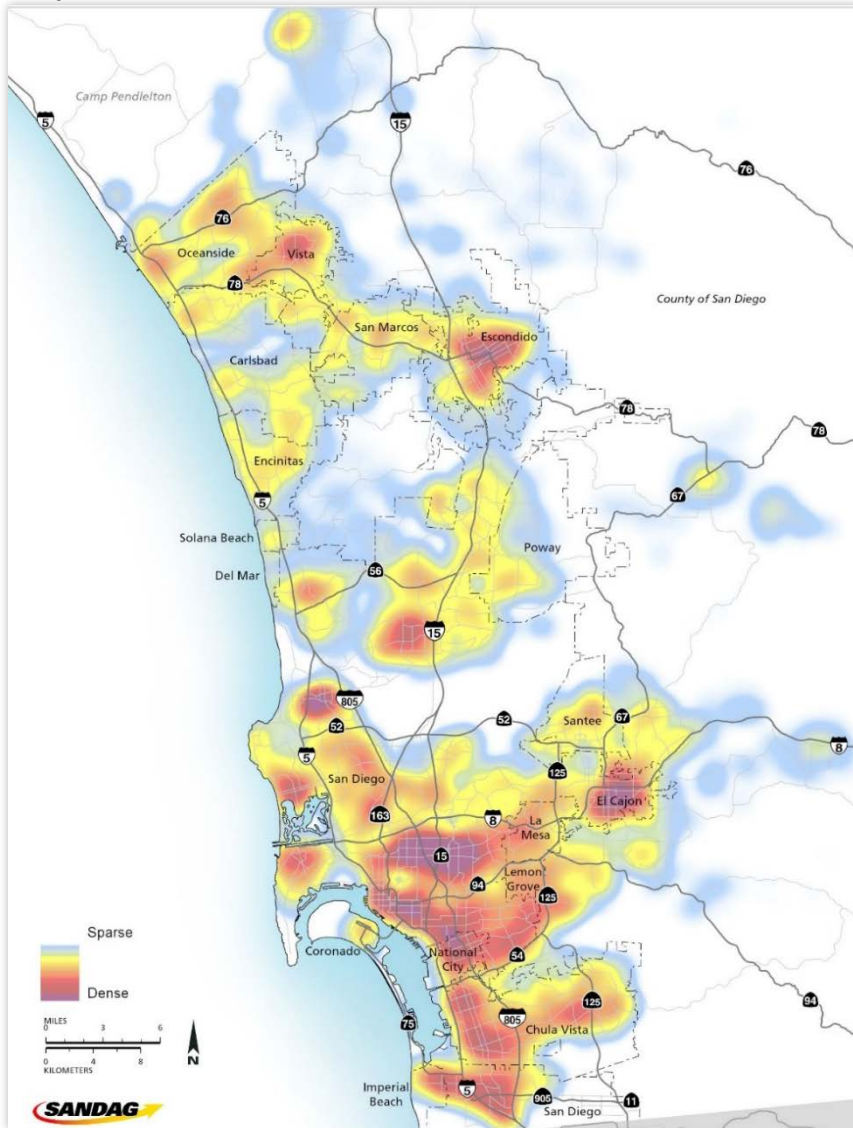


# Santee Peak Period Travel

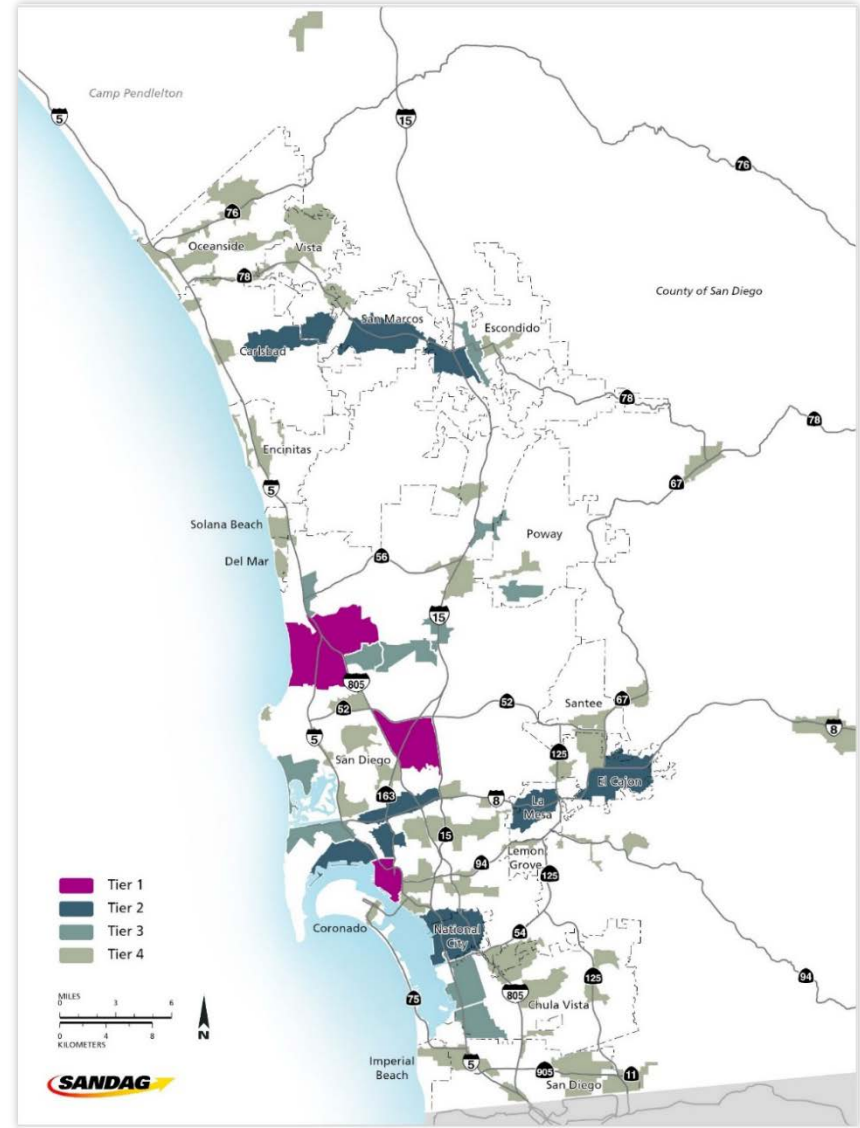


# Where People Live and Work

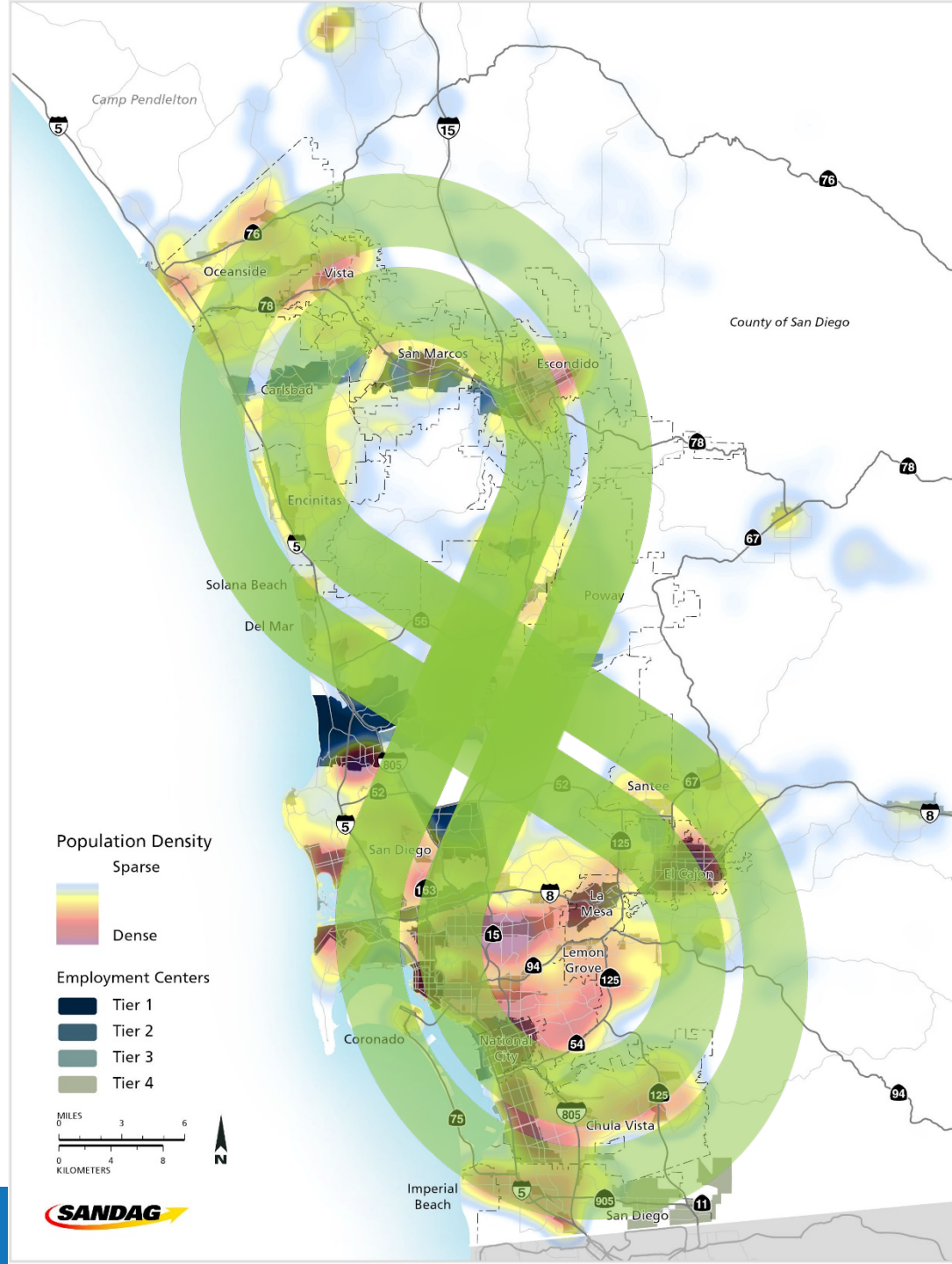
Population Densities



Employment Densities



# Foundation for a Bold New Vision



# 5 Big Moves

## NEXT OS

Enabling  
technology

## COMPLETE CORRIDORS

Backbone of the  
system

## FLEXIBLE FLEETS

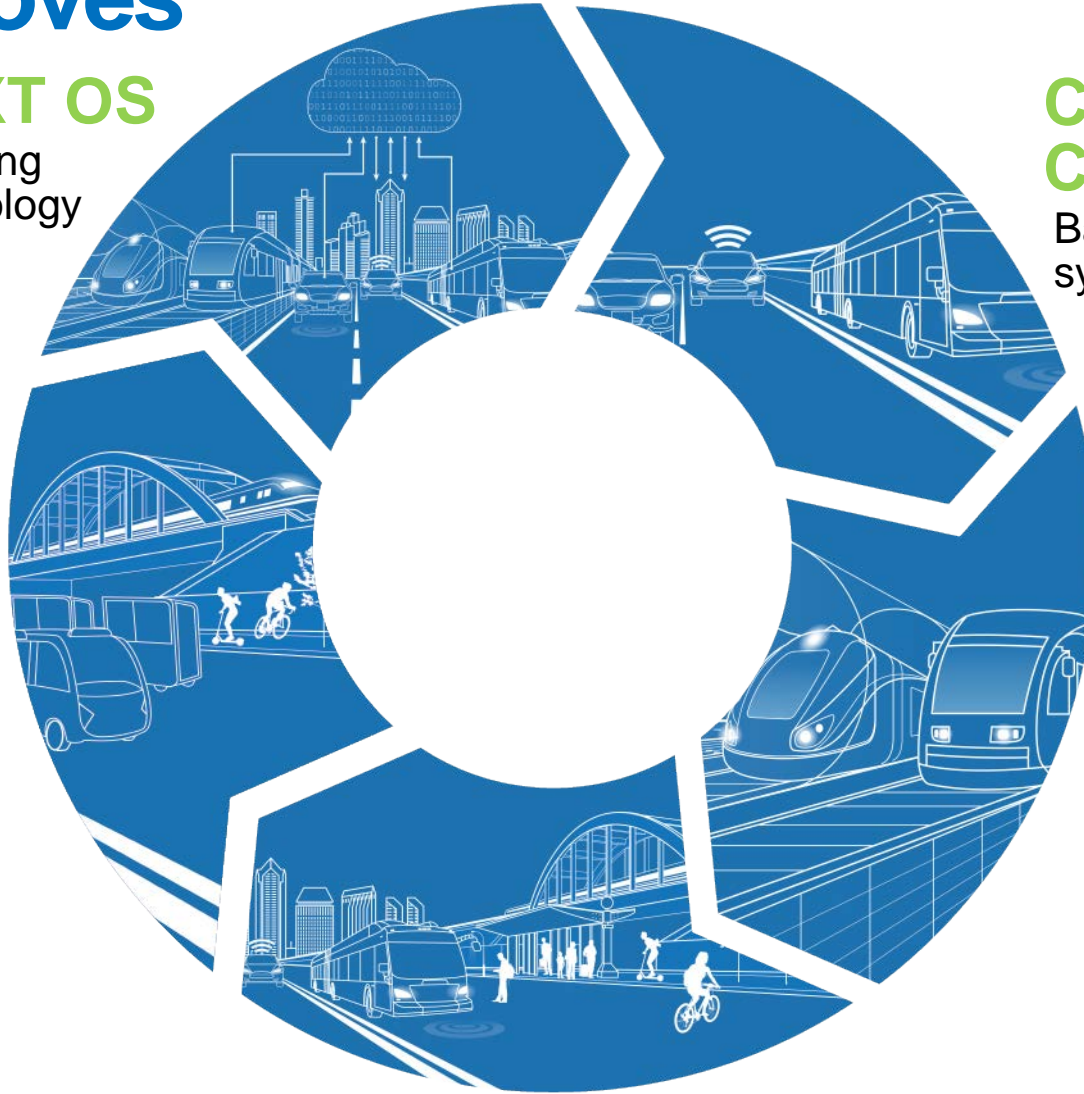
Last mile options

## TRANSIT LEAP

Alternatives to  
automobiles

## MOBILITY HUBS

Transfer points



# Complete Corridors





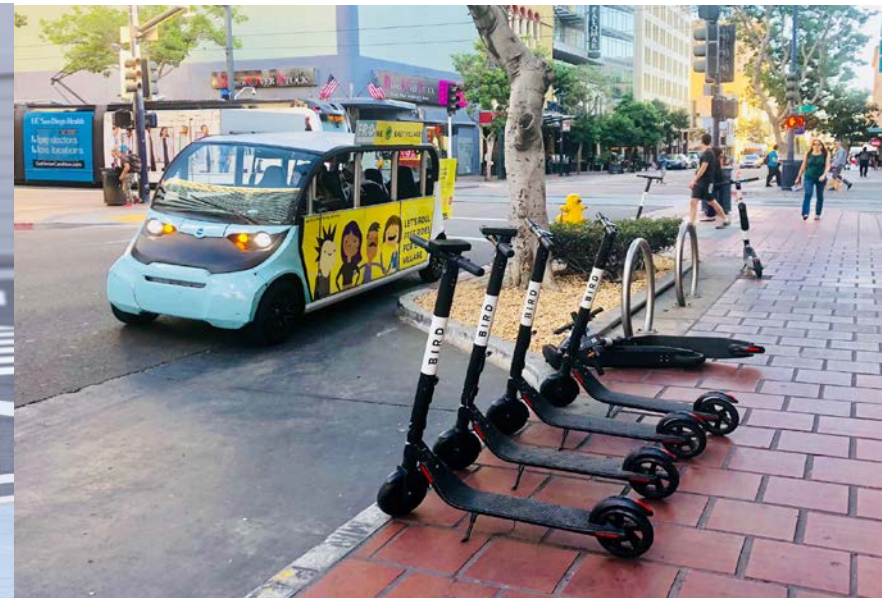
# Transit Leap



# Mobility Hubs



# Flexible Fleets



# Next OS



# Potential Critical Connections

- High Speed Complete Corridor
- East-West Complete Corridor
- Blue Line Express
- Purple Line
- Del Mar Trench
- UTC-Sorrento Valley Connector
- Mobility Hubs



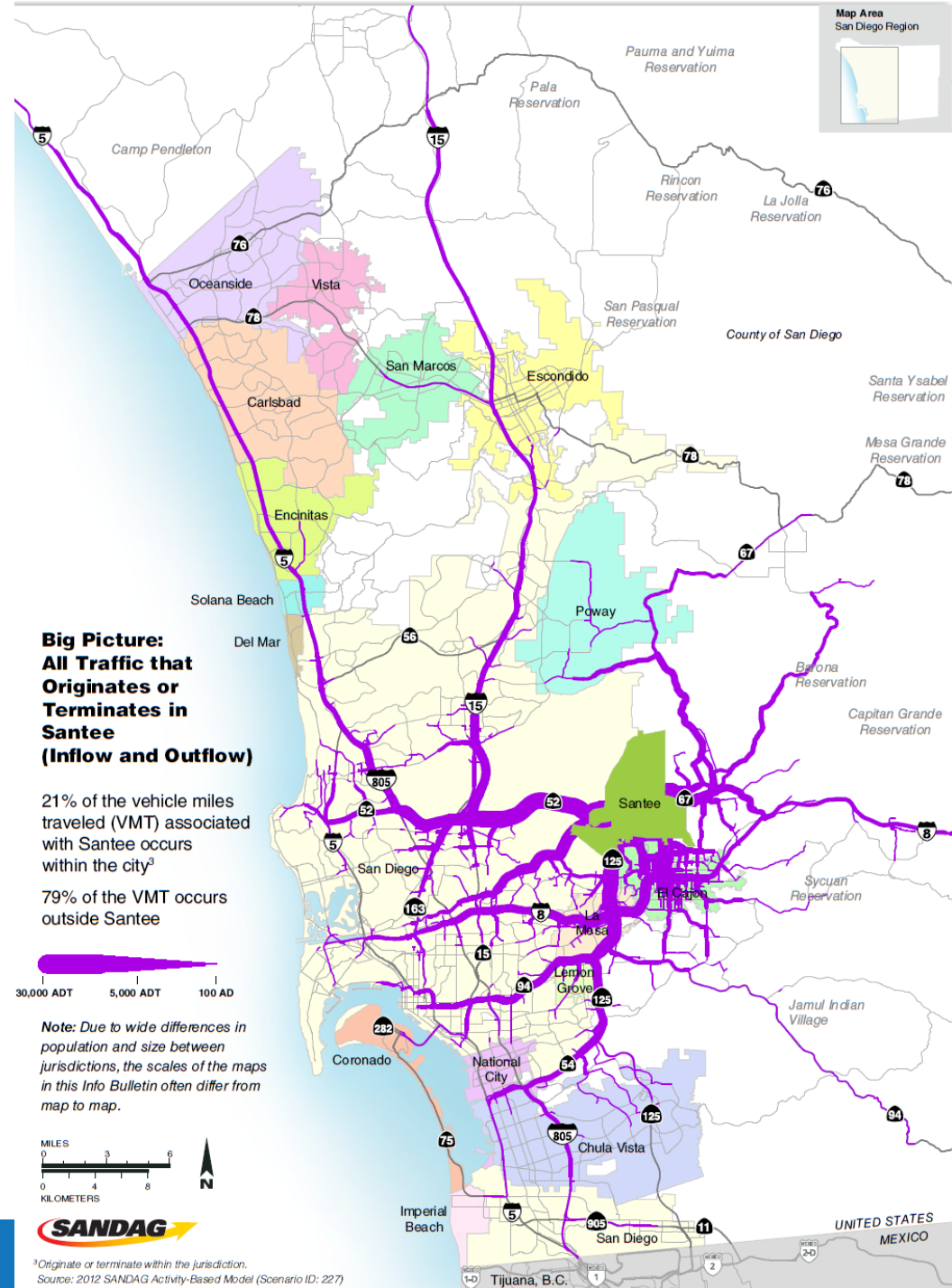
# Who uses SR 52?

Origin or Destination  
in Santee

57,000 Population

11,000 Jobs

- 29% Retail
- 20% Food Services
- 15% Construction
- 11% Manufacturing



# Who uses SR 52?

Origin or Destination in Santee

**32%** SR 52 at  
Mission Trails Summit

**96,000 ADT**

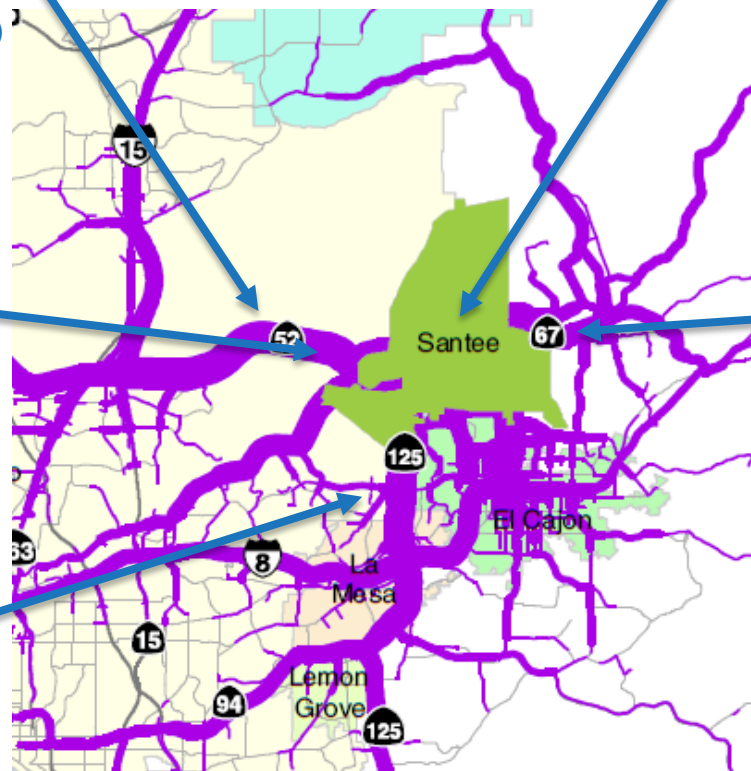
(Average Daily Traffic)

**31%** SR 52 at  
Cuyamaca  
**80,000 ADT**

**27%** SR 67 at  
Bradley  
**93,000 ADT**

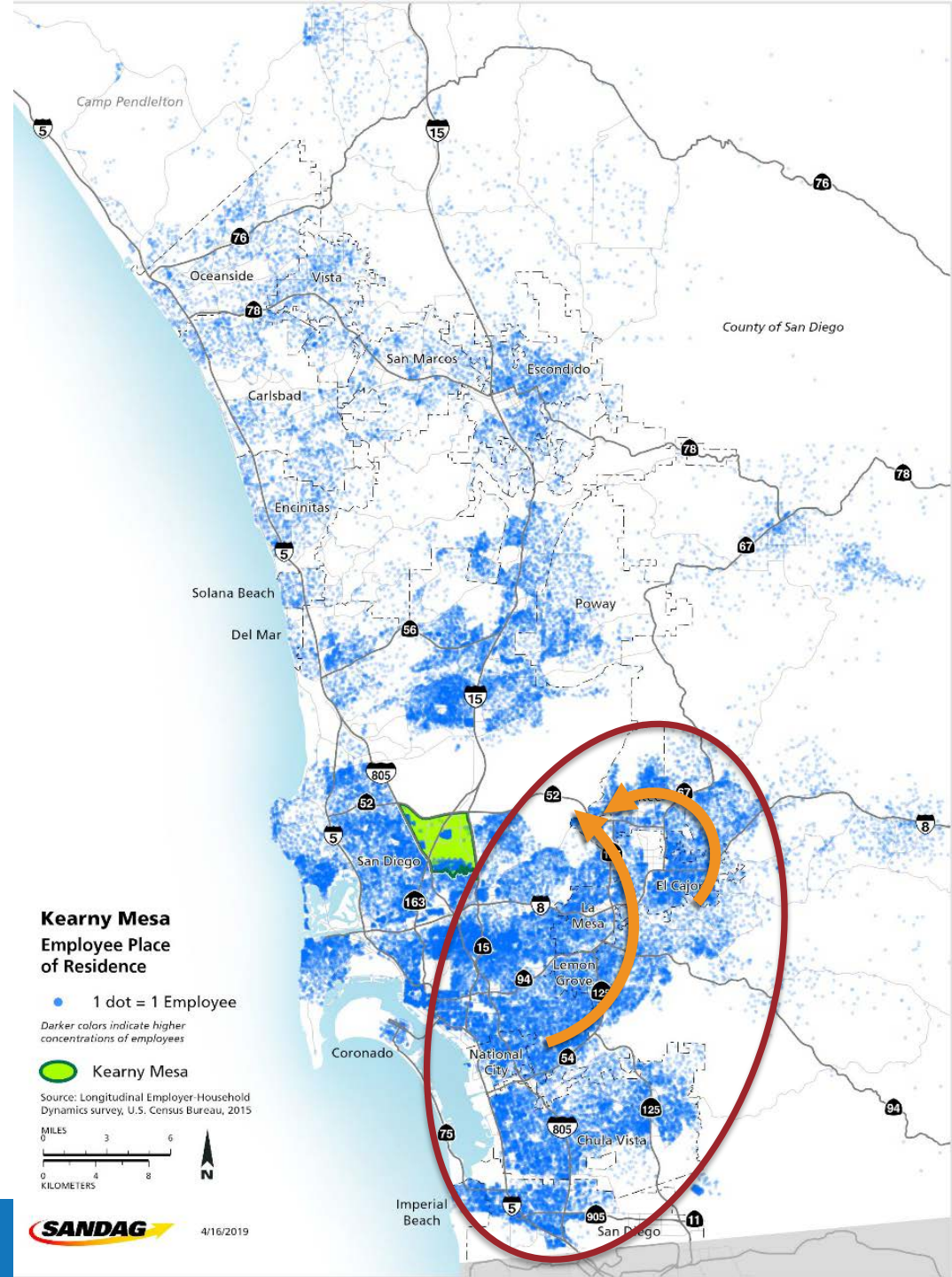
**23%** SR 52 between  
Mast and SR-125  
**83,000 ADT**

**62%** SR 125 after  
Grossmont college  
**68,000 ADT**



# Kearny Mesa Employment Center

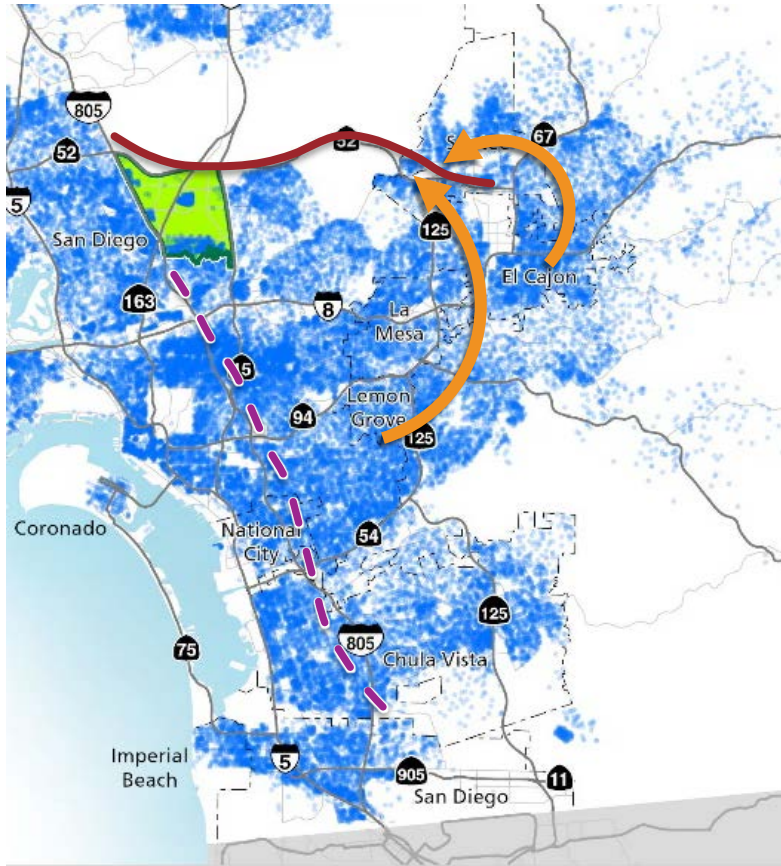
Employees place of residence





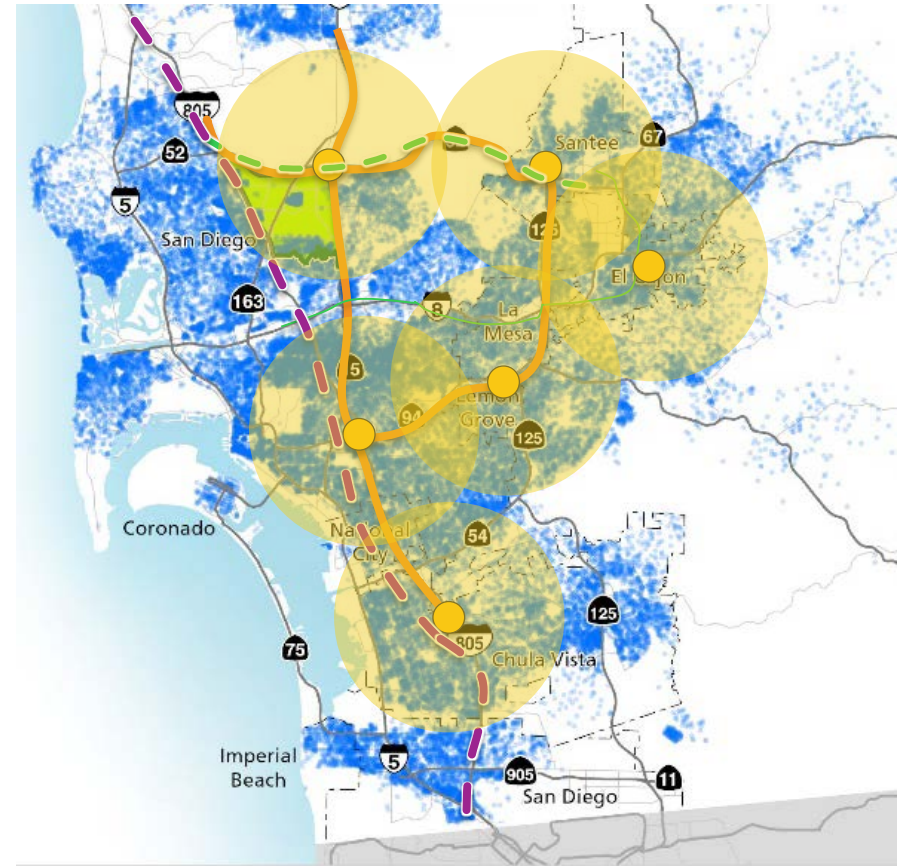
# Concept

## 2015 Regional Plan



- TransNet HOV Lane
- - - Purple line

## 5 Big Moves



- Complete Corridor
- - - Transit Leap
- - - Re-envisioned Purple line
- Mobility Hubs
- Flexible Fleets

# What's Next?

- Summer webinars on the 5 Big Moves
- Framework (projects, programs, policies) in November
- Adopt the plan in late 2021

# A Bold New Transportation Vision in 5 Big Moves

