

Figure 3-22: Street Tree Planting

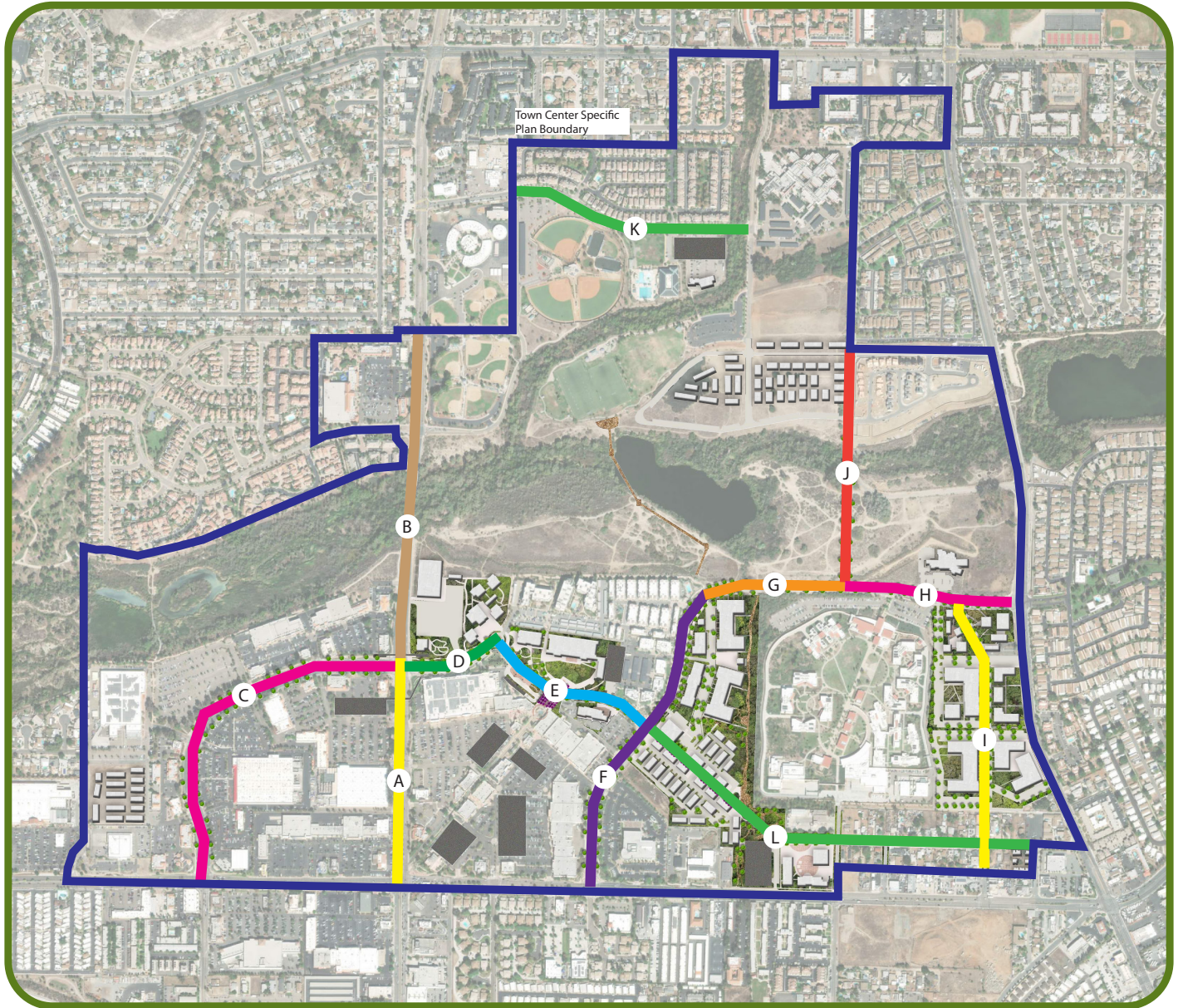


Table 3-15: Street Tree Planting List

Key	Street	Segment	Primary Tree	Secondary Tree
A	Cuyamaca Street	Town Center Parkway to Mission Gorge Road		
		Parkway (up to 9')	Ulmus parvifolia - Chinese Evergreen Elm	Quercus suber - Cork Oak
		Median (up to 28')	Jacaranda mimosifolia - Jacaranda	Koelreuteria bipinnata - Chinese Flame Tree
B	Cuyamaca Street	River Park Drive to Town Center Parkway		
		Parkway (up to 3')	Cercis occidentalis - Western Redbud	Callistemon citrinus - Lemon Scented Bottle Brush
		Parkway (up to 4')	Chitalpa tashkentensis - Chitalpa	Hymenosporum flavum - Sweetshade
C	Town Center Parkway	Mission Gorge Road to Cuyamaca Street		
		Median (up to 18')	Pinus canariensis - Canary Island Pine	Pinus pinea - Italian Stone Pine
		Parkway (up to 3')	Cercis occidentalis - Western Redbud	Chitalpa tashkentensis - Chitalpa
D	Town Center Parkway	Cuyamaca Street to Parc One		
		Parkway (up to 6')	Geijera parviflora - Australian Willow	Lagerstroemia indica - Crape Myrtle
E	Town Center Parkway	Parc One to Riverview Parkway		
		Parkway (up to 4')	Lophostemen confertus - Brisbane Box	Brachychiton populneus - Bottle Tree
		Parkway (up to 9')	Magnolia grandiflora - Southern Magnolia	Bauhinia blakeana - Hong Kong Orchid Tree
F	Riverview Parkway	Mission Gorge Road to Meadow Way		
		Parkway (up to 11')	Quercus suber - Cork Oak	Koelreuteria bipinnata - Chinese Flame Tree
		Parkway (up to 12')	Quercus ilex - Holly Oak	Cinnamomum camphora - Camphor Tree
G	Riverview Parkway	Meadow Way to Cottonwood Avenue		
		Parkway (up to 2')	Chitalpa tashkentensis - Chitalpa	Cercis occidentalis - Western Redbud

Key	Street	Segment	Primary Tree	Secondary Tree
H	Riverview Parkway	Cottonwood Avenue to Magnolia Avenue		
		Median (up to 18')	Metrosideros excelsus - New Zealand Xmas Tree	Pinus canariensis - Canary Island Pine
		Parkway (up to 6')	Ginko biloba - Maiden Hair Tree	Alnus glutinosa - Black Alder
		Parkway (up to 7')	Platanus acerifolia - London Plane Tree	Robinia pseudoacacia - Black Locust
I	Edgemoor Drive	Third Street to Riverview Parkway		
		Parkway (up to 2')	Lophostemen confertus - Brisbane Box	Lagerstroemia indica - Crape Myrtle
J	Cotonwood Avenue	Park Center Drive to Riverview Parkway		
			Magnolia grandiflora - Southern Magnolia	Cinnamomum camphora - Camphor Tree
K	Riverwalk Drive	Park Center Drive to Cuyamaca Street		
		Parkway (up to 4')	Quercus suber - Cork Oak	Quercus ilex - Holly Oak
L	Park Avenue	Riverview Parkway to Magnolia Avenue		
		Parkway (up to 4')	Quercus suber - Cork Oak	Quercus ilex - Holly Oak

Street Tree Clearances

Street trees shall be planted between a minimum of fifteen (15) feet and a maximum of twenty (30) feet to the satisfaction of the City Engineer.

Double rows of trees are encouraged, with trees triangulated at the distances listed above. Tree spacing should be equal between street lights, where feasible.

Trees can be grouped and do not have to be equally spaced if alternative layouts are warranted due to conflicts with driveways, utilities, or other design elements.

- ▶ Fifteen (15) feet minimum from street lights.
- ▶ Five (5) feet minimum from driveway apron flares.

- ▶ Twenty (20) feet minimum from the front of any traffic signal or stop sign.
- ▶ Ten (10) feet minimum from the back of any traffic signal or stop sign.
- ▶ Five (5) feet minimum from underground utilities.
- ▶ Ten (10) feet minimum from sewer lines.

Street trees must be installed with an irrigation system designed by a registered Landscape Architect or irrigation consultant, root control barriers, and where appropriate tree grates shall be used. Use of structural soil allows for the elimination of the root control barrier in most cases, and is encouraged.